

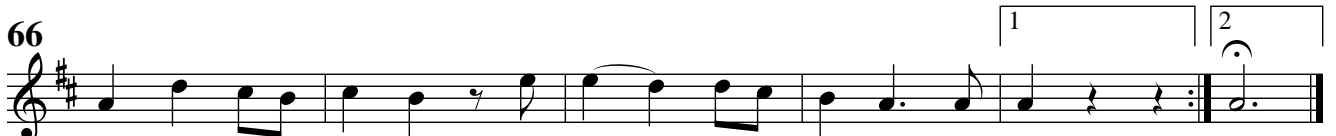
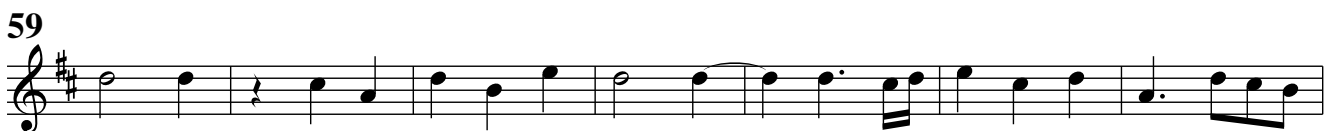
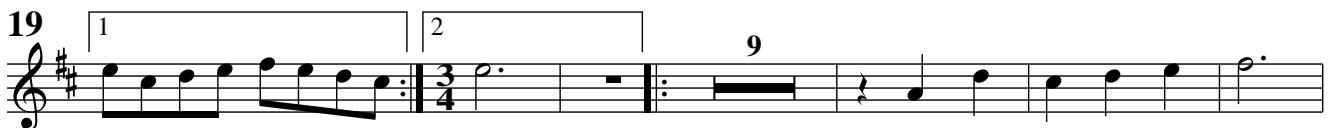
FLORILEGIUM PRIMUM

Suite 1 – EUSEBIA

1. Ouverture

Georg Muffat

Tenore



2. Air

Two staves of musical notation for the piece '2. Air'. The first staff begins with a treble clef, a key signature of two sharps (F# and C#), and a time signature of 2/2. The melody starts with a half note G4, followed by quarter notes A4, B4, and C5, then a half note D5. The second staff starts at measure 8 and features two first endings (labeled '1') and two second endings (labeled '2'). The key signature and time signature remain the same.

3. Sarabande

Two staves of musical notation for the piece '3. Sarabande'. The first staff begins with a treble clef, a key signature of two sharps, and a time signature of 3/4. The melody starts with a quarter note G4, followed by quarter notes A4, B4, and C5, then a quarter note D5. The second staff starts at measure 9 and continues the melody. The key signature and time signature remain the same.

4. Gigue I

Four staves of musical notation for the piece '4. Gigue I'. The first staff begins with a treble clef, a key signature of two sharps, and a time signature of 6/8. The melody starts with a quarter rest, followed by a quarter note G4, then a quarter note A4. The second staff starts at measure 7 and continues the melody. The third staff starts at measure 13 and continues the melody. The fourth staff starts at measure 19 and continues the melody. The key signature and time signature remain the same.

5. Gavotte



6. Gigue II



7. Menuet

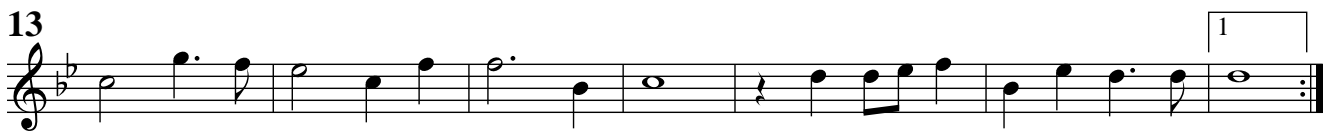


Suite 2 – SPERANTIS GAUDIA

1. Ouverture

Georg Muffat

Tenore



2. Balet

Musical score for '2. Balet' in G minor, 2/2 time. The score consists of three staves. The first staff starts with a whole rest and contains the first five measures. The second staff, starting at measure 6, contains measures 6 through 11. The third staff, starting at measure 12, contains measures 12 through 15, including a triplet of eighth notes in measure 13. The key signature has two flats (B-flat and E-flat).

3. Bourrée

Musical score for '3. Bourrée' in G minor, 3/4 time. The score consists of three staves. The first staff starts with a repeat sign and contains measures 1 through 5, with first and second endings marked above measures 4 and 5. The second staff, starting at measure 6, contains measures 6 through 13. The third staff, starting at measure 14, contains measures 14 through 17. The key signature has two flats (B-flat and E-flat).

4. Rondeau

Musical score for '4. Rondeau' in G minor, 3/4 time. The score consists of four staves. The first staff contains measures 1 through 9. The second staff, starting at measure 10, contains measures 10 through 20. The third staff, starting at measure 21, contains measures 21 through 30. The fourth staff, starting at measure 31, contains measures 31 through 40. The fifth staff, starting at measure 41, contains measures 41 through 45. The key signature has two flats (B-flat and E-flat).

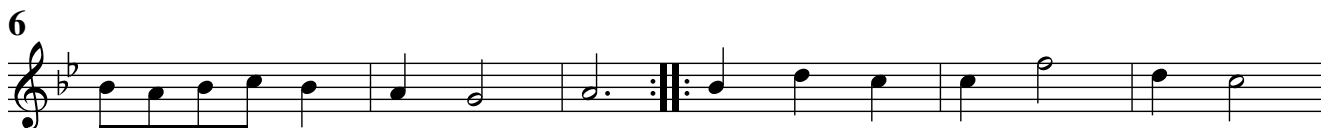
5. Gavotte



6. Menuet I



7. Menuet II



Menuet I da capo

Suite 3 – GRATITUDO

1. Ouverture

Tenore

Georg Muffat

6

12

17

25

29

32

36

2. Balet



3. Air



4. Bourrée



Suite 4 – IMPATIENTIA

1. Symphonie

Georg Muffat

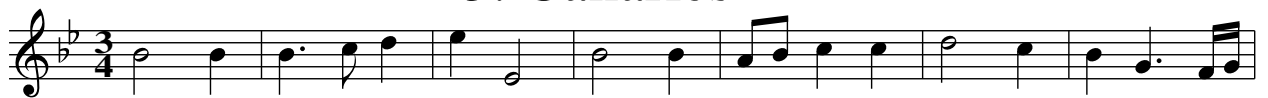
Tenore



2. Balet



3. Canaries



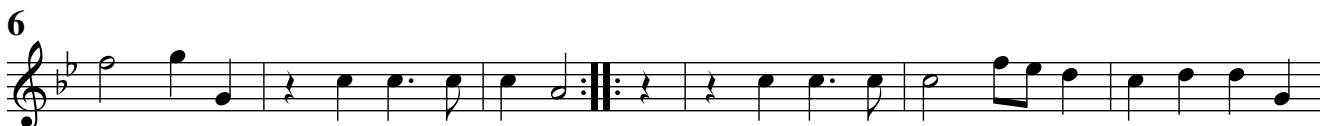
4. Gigue



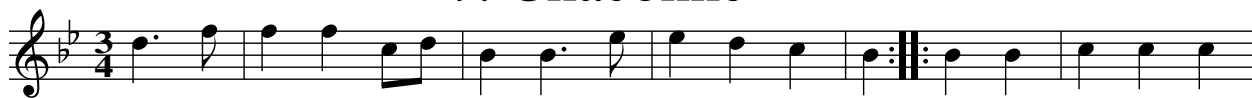
5. Sarabande



6. Bourrée



7. Chaconne



Suite 5 – SOLLICITUDO

1. Ouverture

Tenore

Georg Muffat

6

11

17

34

42

48

55

62

71

2. Allemande



Musical score for Allemande, Tenore. The piece is in C major, 3/4 time. It consists of three staves of music. The first staff starts with a treble clef and a common time signature. The second staff begins with a measure rest and a '6' above the staff. The third staff begins with a measure rest and an '11' above the staff. The piece concludes with a double bar line and repeat dots.

3. Air



Musical score for Air, Tenore. The piece is in C major, 3/4 time. It consists of two staves of music. The first staff starts with a treble clef and a common time signature. The second staff begins with a measure rest and a '6' above the staff. The piece concludes with a double bar line and repeat dots.

4. Gavotte



Musical score for Gavotte, Tenore. The piece is in C major, 3/4 time. It consists of two staves of music. The first staff starts with a treble clef and a common time signature. The second staff begins with a measure rest and a '6' above the staff. The piece concludes with a double bar line and repeat dots.

5. Menuet I



6. Menuet II



Menuet I da capo

7. Bourrée



Suite 6 – BLANDITIAE

1. Overture

Tenore

Georg Muffat

7

14

21

26

30

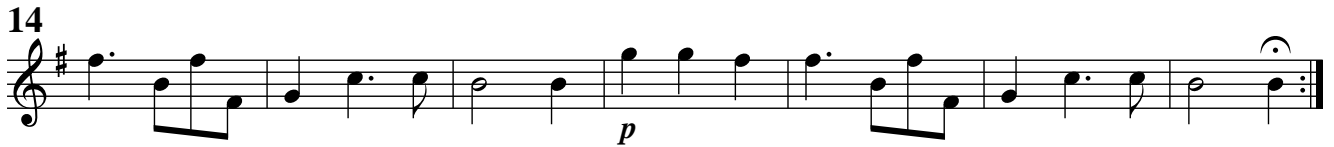
33

36

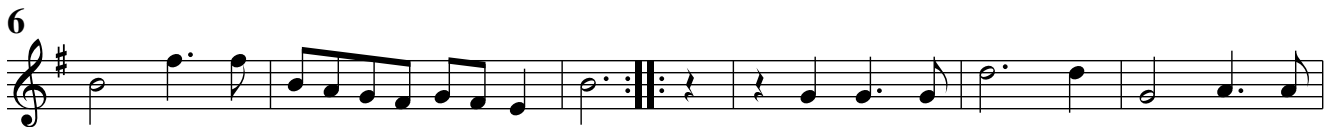
40

p

2. Sarabande



3. Bourrée



4. Chaconne



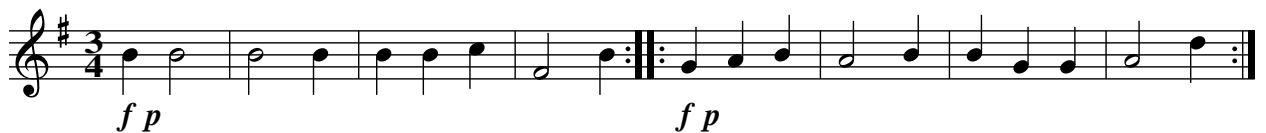
5. Gigue



6. Menuet



7. Echo



Suite 7 – CONSTANTIA

1. Air

Georg Muffat

Tenore



2. Entrée des Fraudes



3. Entrée des Insultes



4. Gavotte



5. Bourrée



6. Menuet I



7. Menuet II



Menuet I da capo

8. Gigue

