

FLORILEGIUM PRIMUM

Suite 1 – EUSEBIA

1. Ouverture

Georg Muffat

Soprano 2



2. Air

6

10

15

3. Sarabande

5

11

4. Gigue I

6

12

18

5. Gavotte



6. Gigue II



7. Menuet



Suite 2 – SPERANTIS GAUDIA

1. Ouverture

Georg Muffat

Soprano 2



2. Balet

Musical score for '2. Balet' in G minor, 2/2 time. The score consists of three staves. The first staff begins with a whole rest followed by a series of eighth and quarter notes. The second staff starts at measure 5 and includes a double bar line with repeat dots. The third staff starts at measure 12 and includes a triplet of eighth notes.

3. Bourrée

Musical score for '3. Bourrée' in G minor, 3/4 time. The score consists of three staves. The first staff includes first and second endings. The second staff starts at measure 6. The third staff starts at measure 14 and ends with a double bar line and repeat dots.

4. Rondeau

Musical score for '4. Rondeau' in G minor, 3/4 time. The score consists of five staves. The first staff starts at measure 9. The second staff starts at measure 18. The third staff starts at measure 27. The fourth staff starts at measure 34. The fifth staff starts at measure 43 and ends with a double bar line and repeat dots.

5. Gavotte



6. Menuet I



7. Menuet II



Menuet I da capo

Suite 3 – GRATITUDO

1. Ouverture

Soprano

Georg Muffat



2. Balet



3. Air



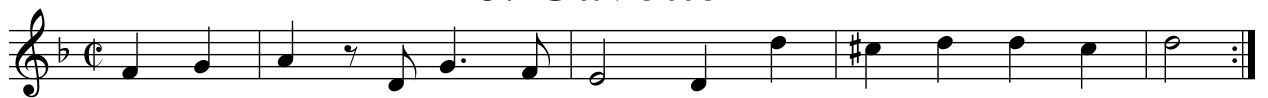
4. Bourrée



5. Gigue



6. Gavotte



7. Menuet



Suite 4 – IMPATIENTIA

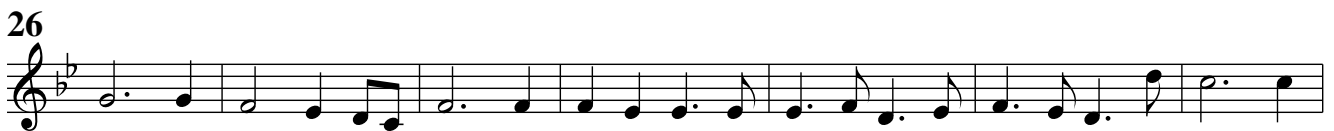
1. Symphonie

Georg Muffat

Soprano 2



2. Balet



3. Canaries



4. Gigue



5. Sarabande



6. Bourrée



7. Chaconne



Suite 5 – SOLLICITUDO

1. Ouverture

Soprano 2

Georg Muffat

6

12

20

28

37

46

54

62

70

2. Allemande

Musical score for '2. Allemande' in C major, 3/4 time. The piece consists of three staves of music. The first staff begins with a treble clef, a common time signature, and a key signature of one sharp (F#). The melody starts with a quarter rest, followed by a series of eighth and quarter notes. The second staff begins with a measure rest labeled '5'. The third staff begins with a measure rest labeled '10'. The piece concludes with a final cadence.

3. Air

Musical score for '3. Air' in C major, 3/4 time. The piece consists of two staves of music. The first staff begins with a treble clef, a 3/4 time signature, and a key signature of one sharp (F#). The melody features a mix of eighth and quarter notes. The second staff begins with a measure rest labeled '6'. The piece concludes with a final cadence.

4. Gavotte

Musical score for '4. Gavotte' in C major, 3/4 time. The piece consists of two staves of music. The first staff begins with a treble clef, a common time signature, and a key signature of one sharp (F#). The melody starts with a quarter rest, followed by eighth and quarter notes. The second staff begins with a measure rest labeled '6'. The piece concludes with a final cadence.

5. Menuet I



6. Menuet II



Menuet I da capo

7. Bourrée



Suite 6 – BLANDITIAE

1. Overture

Soprano 2

Georg Muffat

8

17

22

27

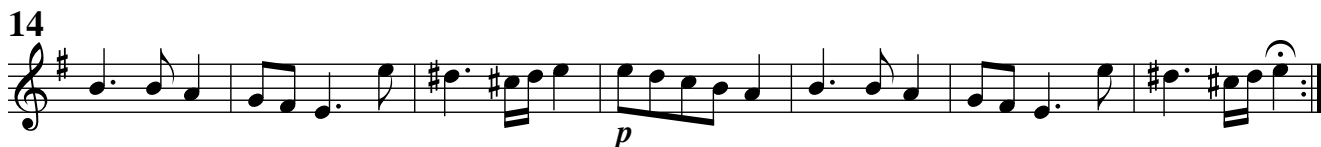
32

35

39

p

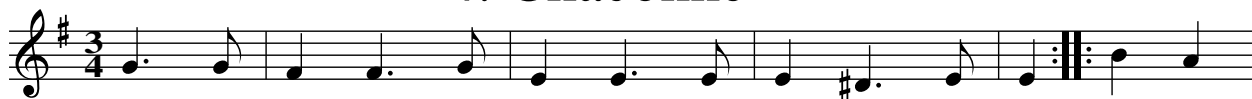
2. Sarabande



3. Bourrée



4. Chaconne



5. Gigue



6. Menuet



7. Echo



Suite 7 – CONSTANTIA

1. Air

Georg Muffat

Soprano 2



2. Entrée des Fraudes



3. Entrée des Insultes

Musical score for 'Entrée des Insultes' in G major, 3/4 time. The score consists of five staves of music. The first staff begins with a whole rest. The second staff starts at measure 7. The third staff starts at measure 13 and includes first and second endings. The fourth staff starts at measure 21. The fifth staff starts at measure 29 and includes first and second endings. The key signature has one sharp (F#) and the time signature is 3/4.

4. Gavotte

Musical score for 'Gavotte' in G major, 3/4 time. The score consists of two staves of music. The first staff begins with a whole rest. The second staff starts at measure 6 and ends with a fermata. The key signature has one sharp (F#) and the time signature is 3/4.

5. Bourrée

Musical score for 'Bourrée' in G major, 3/4 time. The score consists of three staves of music. The first staff begins with a whole rest. The second staff starts at measure 6 and includes a first ending. The third staff starts at measure 14 and includes a first ending. The key signature has one sharp (F#) and the time signature is 3/4.

6. Menuet I



7. Menuet II



Menuet I da capo

8. Gigue

