

# FLORILEGIUM PRIMUM

## Suite 1 – EUSEBIA

### 1. Ouverture

*Georg Muffat*

#### Soprano 1

5

11

15

21

30

39

47

55

64

1 2 Allegro

## 2. Air

5

9

15

## 3. Sarabande

Grave

9

## 4. Gigue I

6

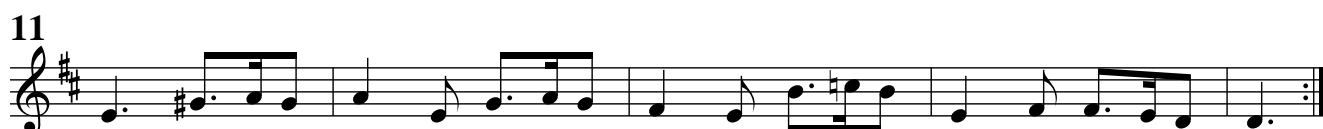
12

18

## 5. Gavotte



## 6. Gigue II



## 7. Menuet



# Suite 2 – SPERANTIS GAUDIA

## 1. Ouverture

*Georg Muffat*

### Soprano 1



## 2. Balet

Musical score for '2. Balet' in G minor, 2/2 time. The score consists of three staves. The first staff starts with a treble clef, a key signature of two flats (B-flat and E-flat), and a 2/2 time signature. The melody begins with a half note G4, followed by quarter notes A4, B-flat4, and C5. The second staff starts at measure 6 and includes a repeat sign. The third staff starts at measure 13 and features several triplet markings (indicated by a '3' below the notes) over the final measures.

## 3. Bourrée

Musical score for '3. Bourrée' in G minor, 3/4 time. The score consists of three staves. The first staff starts with a treble clef, a key signature of two flats, and a 3/4 time signature. It includes first and second endings, marked with '1' and '2' above the notes. The second staff starts at measure 6. The third staff starts at measure 14 and ends with a double bar line and repeat dots.

## 4. Rondeau

Musical score for '4. Rondeau' in G minor, 3/4 time. The score consists of five staves. The first staff starts with a treble clef, a key signature of two flats, and a 3/4 time signature. The second staff starts at measure 9. The third staff starts at measure 17. The fourth staff starts at measure 26. The fifth staff starts at measure 34. The final staff starts at measure 43 and ends with a double bar line and repeat dots.

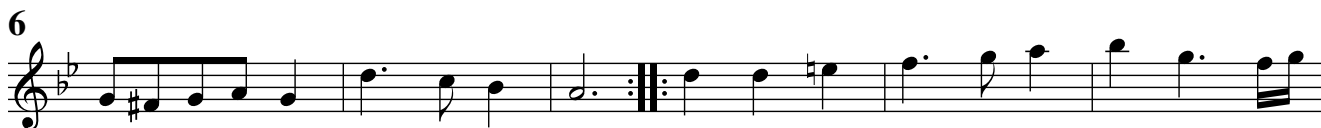
## 5. Gavotte



## 6. Menuet I



## 7. Menuet II



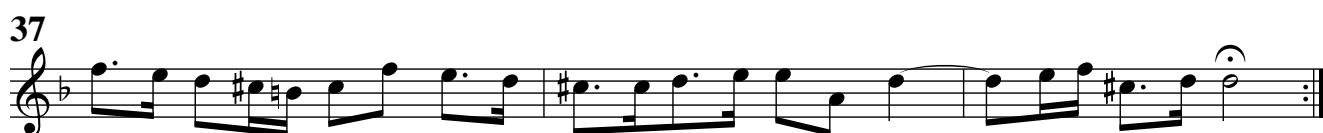
Menuet I da capo

# Suite 3 – GRATITUDO

## 1. Ouverture

Sopranino

*Georg Muffat*



## 2. Balet



## 3. Air



## 4. Bourrée





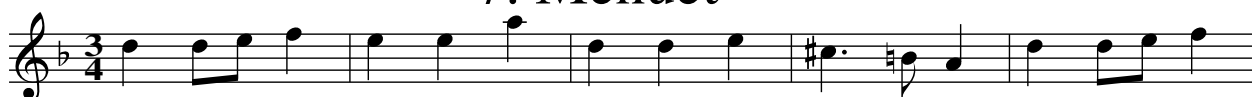
## 5. Gigue



## 6. Gavotte



## 7. Menuet



# Suite 4 – IMPATIENTIA

## 1. Symphonie

Georg Muffat

### Soprano 1

Allegro

8

17 1 2 Grave

26

32

38 Presto

42

47

52

58 1 Grave 2

*p*

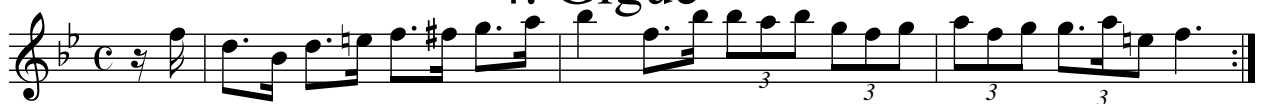
## 2. Balet



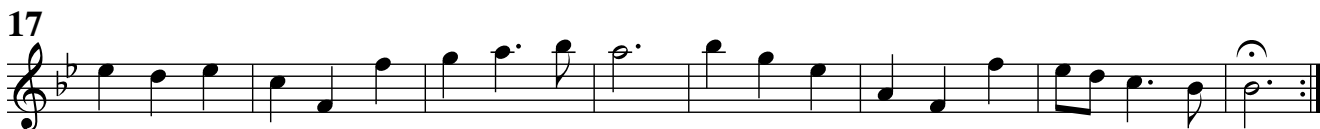
## 3. Canaries



## 4. Gigue



## 5. Sarabande



## 6. Bourrée



## 7. Chaconne



# Suite 5 – SOLLICITUDO

## 1. Ouverture

### Soprano 1

*Georg Muffat*

7

14 1 2 Allegro

22

32

41

49

60

69 1 2

## 2. Allemande

Largo

Musical score for Allemande, Soprano 1 part. The score is written in treble clef with a common time signature (C). It consists of four staves of music. The first staff begins with a treble clef, a common time signature, and a fermata over a quarter rest. The tempo marking 'Largo' is placed above the first staff. The key signature has one sharp (F#). The piece concludes with a double bar line and repeat dots.

## 3. Air

Musical score for Air, Soprano 1 part. The score is written in treble clef with a 6/8 time signature. It consists of two staves of music. The key signature has one sharp (F#). The piece concludes with a double bar line and repeat dots.

## 4. Gavotte

Musical score for Gavotte, Soprano 1 part. The score is written in treble clef with a common time signature (C). It consists of three staves of music. The key signature has one sharp (F#). The piece concludes with a double bar line and repeat dots.

## 5. Menuet I



## 6. Menuet II



Menuet I da capo

## 7. Bourrée



# Suite 6 – BLANDITIAE

## 1. Overture

### Soprano 1

*Georg Muffat*



## 2. Sarabande





## 3. Bourrée



Musical score for 3. Bourrée, Soprano 1. The piece is in G major and 3/4 time. It consists of four staves of music. The first staff starts with a treble clef, a key signature of one sharp (F#), and a 3/4 time signature. The melody begins with a quarter note G4, followed by quarter notes A4, B4, and C5. The second staff starts at measure 6 and includes a repeat sign. The third staff starts at measure 12. The fourth staff starts at measure 18 and ends with a fermata over the final note.

## 4. Chaconne



Musical score for 4. Chaconne, Soprano 1. The piece is in G major and 3/4 time. It consists of three staves of music. The first staff starts with a treble clef, a key signature of one sharp (F#), and a 3/4 time signature. The melody begins with a quarter note G4, followed by quarter notes A4, B4, and C5. The second staff starts at measure 5 and includes a repeat sign. The third staff starts at measure 11 and ends with a fermata over the final note.

## 5. Gigue



Musical score for 5. Gigue, Soprano 1. The piece is in G major and 6/8 time. It consists of four staves of music. The first staff starts with a treble clef, a key signature of one sharp (F#), and a 6/8 time signature. The melody begins with a quarter note G4, followed by quarter notes A4, B4, and C5. The second staff starts at measure 4 and includes a repeat sign. The third staff starts at measure 9. The fourth staff starts at measure 14 and ends with a fermata over the final note.

## 6. Menuet

7

13

19

## 7. Echo

*fp* *fp*

7 *fp* *f*

14 *p* *f*

19 *p* *fp*

# Suite 7 – CONSTANTIA

## 1. Air

*Georg Muffat*

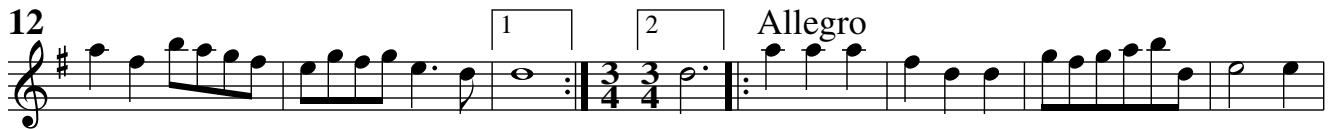
### Soprano 1



## 2. Entrée des Fraudes



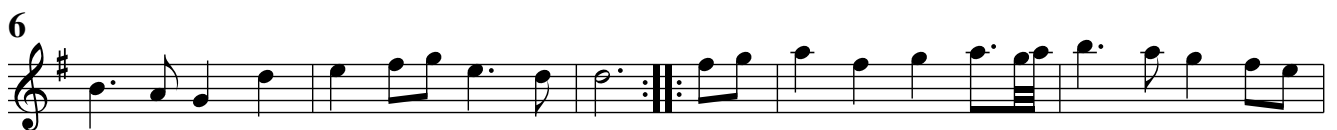
## 3. Entrée des Insultes



## 4. Gavotte



## 5. Bourrée



## 6. Menuet I



## 7. Menuet II



Menuet I da capo

## 8. Gigue

