

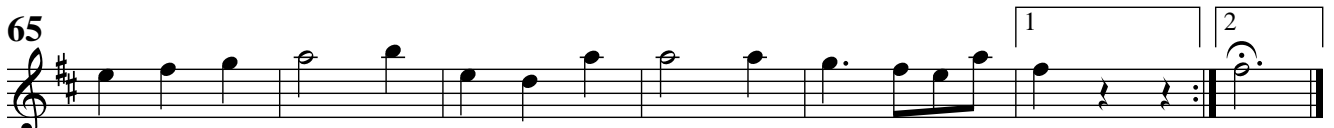
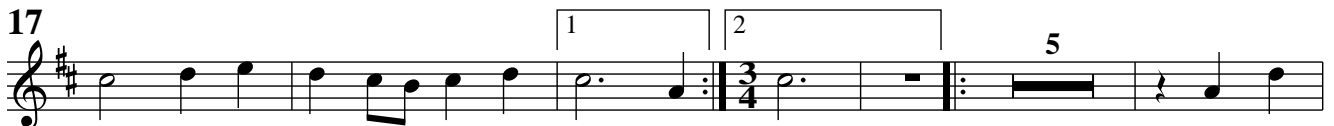
# FLORILEGIUM PRIMUM

## Suite 1 – EUSEBIA

### 1. Ouverture

*Georg Muffat*

Alto



## 2. Air

6

10

15

## 3. Sarabande

8

## 4. Gigue I

7

13

19

## 5. Gavotte

Musical score for Gavotte, measures 1-12. The piece is in G major and 6/8 time. The notation is on a single treble clef staff. Measure 1 starts with a quarter rest followed by a dotted quarter note G4. The melody continues with eighth and quarter notes. Measure 5 is marked with a '5' and shows a sequence of eighth notes. Measure 9 is marked with a '9' and features a sixteenth-note triplet. Measure 12 is marked with a '12' and ends with a double bar line and repeat dots.

## 6. Gigue II

Musical score for Gigue II, measures 1-13. The piece is in G major and 3/8 time. The notation is on a single treble clef staff. Measure 1 starts with a quarter note G4. The melody is characterized by eighth-note patterns. Measure 5 is marked with a '5' and shows a sequence of eighth notes. Measure 10 is marked with a '10' and features a sixteenth-note triplet. Measure 13 is marked with a '13' and ends with a double bar line and repeat dots.

## 7. Menuet

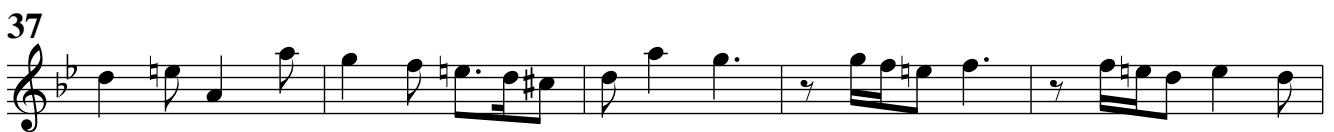
Musical score for Menuet, measures 1-17. The piece is in G major and 3/4 time. The notation is on a single treble clef staff. Measure 1 starts with a quarter note G4. The melody is characterized by quarter and eighth notes. Measure 8 is marked with an '8' and shows a sequence of quarter notes. Measure 17 is marked with a '17' and ends with a double bar line and repeat dots.

# Suite 2 – SPERANTIS GAUDIA

## 1. Ouverture

*Georg Muffat*

### Alto



## 2. Balet

Musical score for '2. Balet' in G minor, 2/2 time. The score consists of three staves. The first staff starts with a whole rest and contains a melodic line. The second staff begins at measure 6 and includes a repeat sign. The third staff begins at measure 12 and ends with a double bar line and repeat dots.

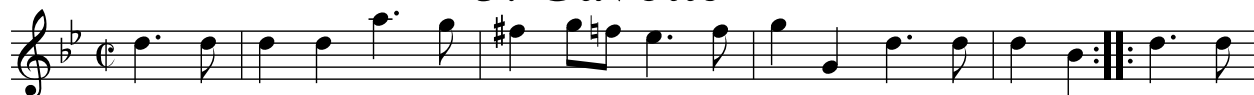
## 3. Bourrée

Musical score for '3. Bourrée' in G minor, 3/4 time. The score consists of three staves. The first staff has first and second endings. The second staff begins at measure 5. The third staff begins at measure 13 and ends with a double bar line and repeat dots.

## 4. Rondeau

Musical score for '4. Rondeau' in G minor, 3/4 time. The score consists of four staves. The first staff begins with a melodic line. The second staff begins at measure 11. The third staff begins at measure 21. The fourth staff begins at measure 31 and ends with a double bar line and repeat dots.

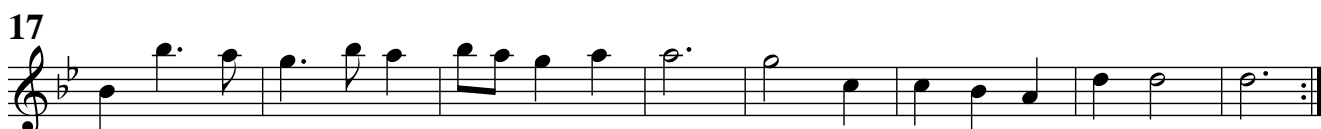
## 5. Gavotte



## 6. Menuet I



## 7. Menuet II



Menuet I da capo

# Suite 3 – GRATITUDO

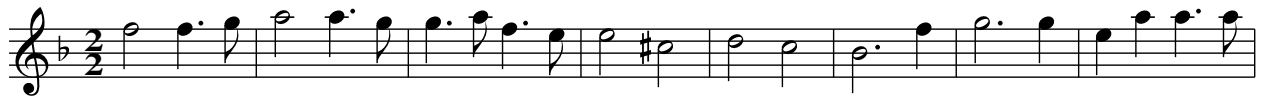
## 1. Ouverture

Alto

*Georg Muffat*



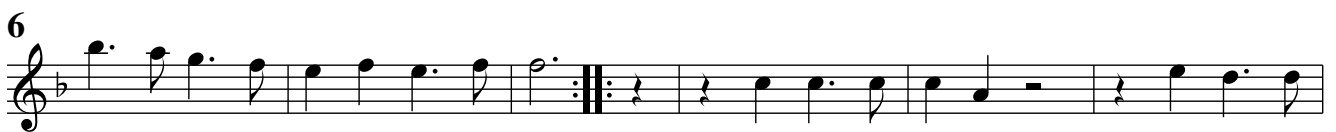
## 2. Balet



## 3. Air



## 4. Bourrée





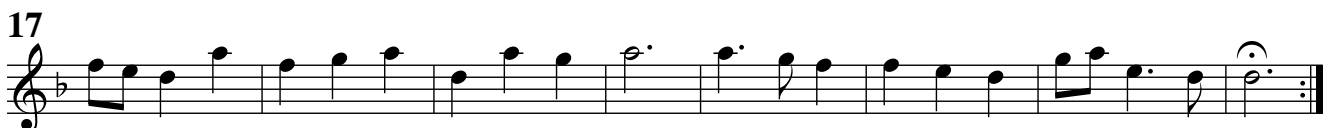
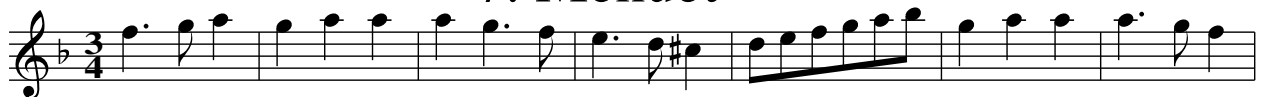
## 5. Gigue



## 6. Gavotte



## 7. Menuet

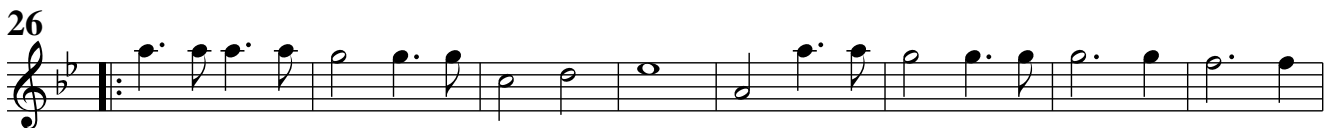


# Suite 4 – IMPATIENTIA

## 1. Symphonie

Georg Muffat

### Alto



## 2. Balet



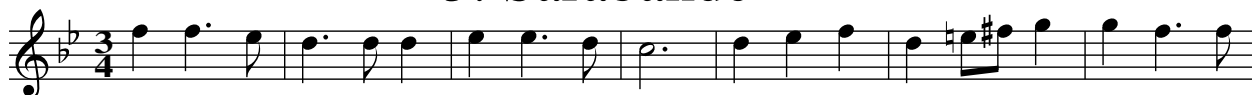
## 3. Canaries



## 4. Gigue



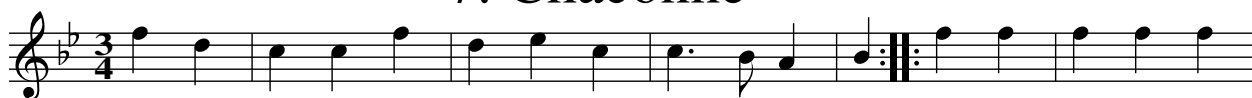
## 5. Sarabande



## 6. Bourrée



## 7. Chaconne



# Suite 5 – SOLLICITUDO

## 1. Overture

Alto

*Georg Muffat*

6

12

25

32

40

49

56

64

72

## 2. Allemande



## 3. Air



## 4. Gavotte



## 5. Menuet I



## 6. Menuet II



Menuet I da capo

## 7. Bourrée



# Suite 6 – BLANDITIAE

## 1. Overture

Alto

Georg Muffat

6

12

19

23

27

31

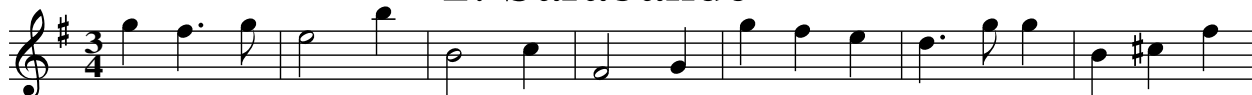
35

39

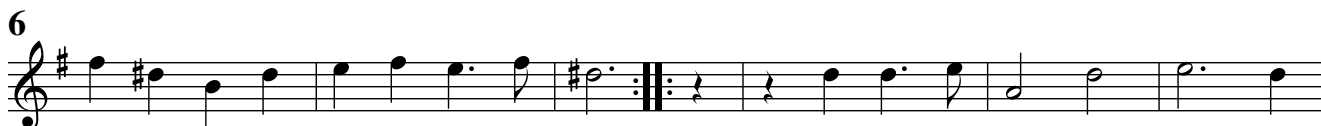
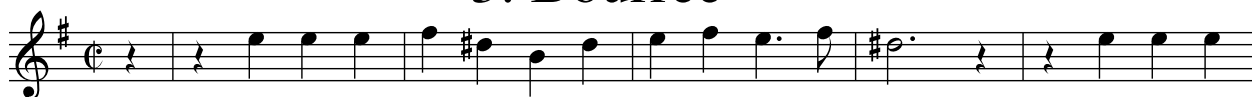
*p*



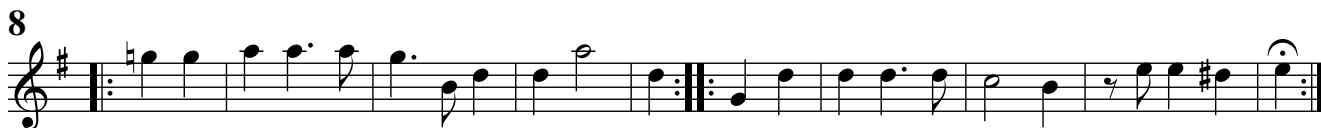
## 2. Sarabande



## 3. Bourrée



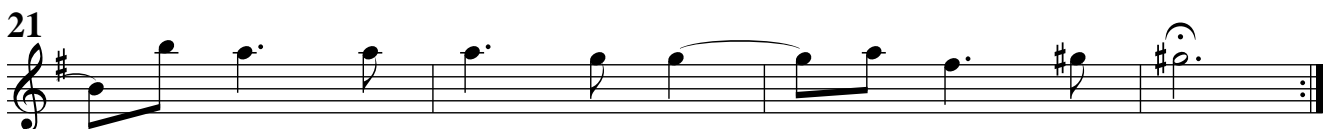
## 4. Chaconne



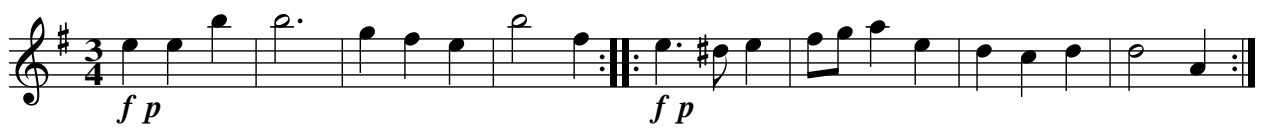
## 5. Gigue



## 6. Menuet



## 7. Echo



# Suite 7 – CONSTANTIA

## 1. Air

*Georg Muffat*

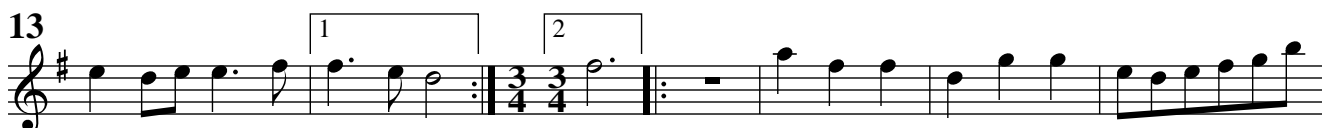
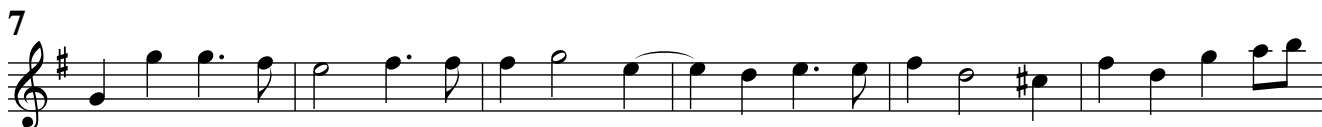
Alto



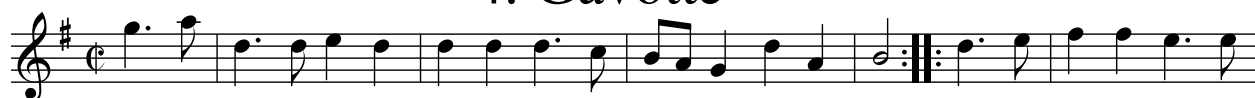
## 2. Entrée des Fraudes



### 3. Entrée des Insultes



### 4. Gavotte



### 5. Bourrée



## 6. Menuet I



## 7. Menuet II



Menuet I da capo

## 8. Gigue

