

Henry Purcell

FANTAZIAS AND IN NOMINES

Fantazia 1

Z.732

Tenore

7

14

21

28

35

42

47

51

56

Fantazia 2

Z.733

2

8

14

21

27

34

38

43

48

54

61

65

Fantazia 3

Z.734

3

9

19

27

35

43

49

55

61

65

70

Fantazia 4Z.735
(10.6.1680)

4



8



12



17



21



24



27



30



33



40



44

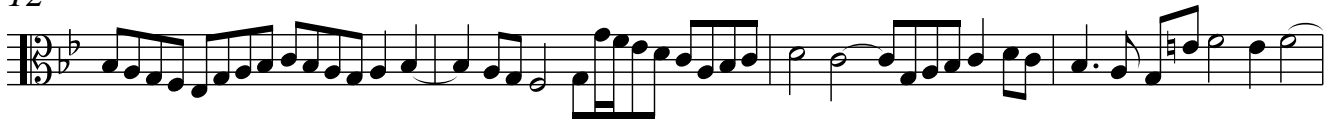


Fantazia 5Z.736
(11.6.1680)

6



12



16



19



22



25



29



33



35



37



40



Fantazia 6

Z.737
(14.6.1680)

Musical score for Fantazia 6, Tenor part. The score is written in bass clef with a key signature of one flat (B-flat) and a common time signature (C). The piece consists of 81 measures, divided into 10 systems of 8 measures each. The first system begins with a measure rest of 3 measures. The notation includes various rhythmic values such as eighth, sixteenth, and thirty-second notes, as well as rests and accidentals. The piece concludes with a final cadence in the 81st measure.

Fantazia 7

Z.738
(19.6.1680)

1

6

12

18

23

28

31

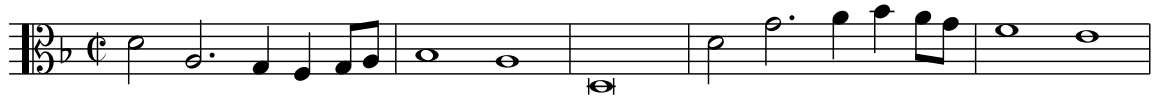
34

37

41

45

48

Fantazia 8Z.739
(22.6.1680)

6



12



17



22



27



32



36



39



42



45



Fantazia 9

Z.740
(23.6.1680)

7



12



16



21



24



27



31



36



39



42



Fantazia 10Z.741
(30.6.1680)

6



13



18



22



26



30



34



38



42

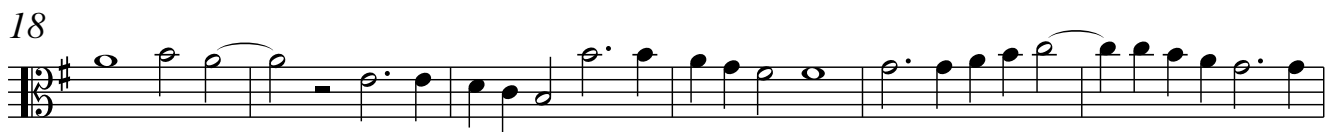


46



48



Fantazia 11Z.742
(18.8.1680)

Fantazia 12

Z.743
(31.8.1680)

13



25



34



42



49



57



64



70



75



87



94



Fantazia 13 [incomplete]Z.744
(23.6.1680)

3



8



13



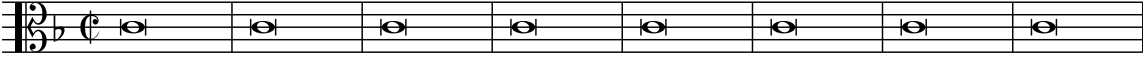
19



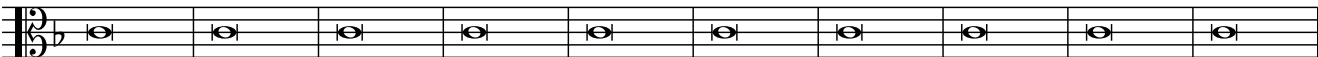
26

**Fantazia upon one note**

Z.745



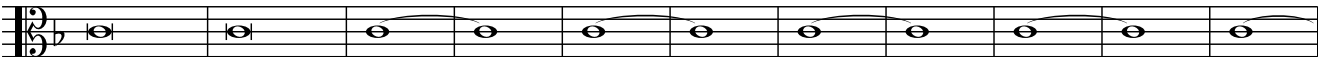
9



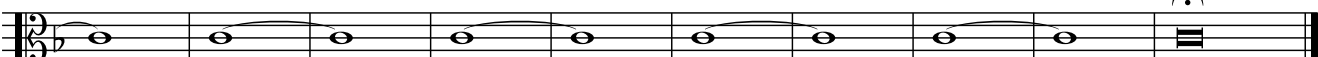
19



29



40



In Nomine 1 of six parts

Z.746

Musical notation for measures 1-4 of the Tenor part. The top staff is a vocal line with a treble clef and a key signature of one flat (B-flat). The bottom staff is a lute or keyboard accompaniment line with a bass clef and a key signature of one flat. The time signature is common time (C). The notation shows a series of notes and rests across four measures.

5

Musical notation for measures 5-8 of the Tenor part. The notation continues from the previous system, showing a melodic line in the upper staff and a more active accompaniment line in the lower staff.

9

Musical notation for measures 9-12 of the Tenor part. The upper staff features a series of half notes and whole notes, while the lower staff has a more complex rhythmic pattern with eighth and sixteenth notes.

16

Musical notation for measures 13-15 of the Tenor part. The upper staff continues with a simple melodic line, and the lower staff shows a steady accompaniment.

20

Musical notation for measures 16-19 of the Tenor part. The upper staff has a series of whole notes, and the lower staff has a more active accompaniment.

24

Musical notation for measures 20-23 of the Tenor part. The upper staff has a series of whole notes, and the lower staff has a more active accompaniment.

27

Musical notation for measures 24-27 of the Tenor part. The upper staff has a series of whole notes, and the lower staff has a more active accompaniment. The piece concludes with a double bar line and repeat signs in both staves.

In Nomine 2 of seven parts

Z.747

