

A HOLY PERSON FALLS INTO THE NILE AS A PELICAN

CLARINET AND HORN

(# 39)

MICHAEL EDWARD EDGERTON

PERFORMANCE NOTES

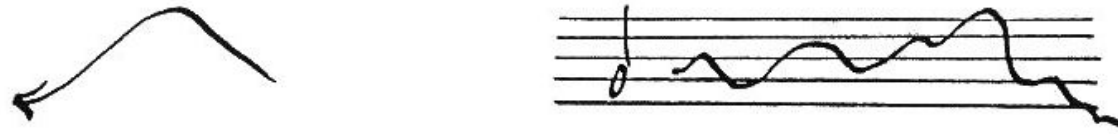
THIS WORK USES THIRD TONE SUBDIVISIONS OF THE HALF-STEP, THESE ARE INDICATED BY:

\dagger = 1/3 OF A HALF-STEP SHARP
 $\#$ = 2/3 OF A HALF-STEP SHARP

THIS WORK USES BOTH INGRESSIVE (INWARD MOVING) AND EGRESSIVE (OUTWARD MOVING) AIRFLOW.

\rightarrow = EGRESSIVE
 \leftarrow = INGRESSIVE

THIS WORK USES APPROXIMATE PITCH NOTATIONS. THIS IS USED WITH INGRESSIVE AIRFLOW, AS WELL AS WITH THE EGRESSIVE AND NORMAL PITCHED MATERIAL. THE NOTATION SUGGESTS CONTOURS TO BE FOLLOWED IN HIGH, MEDIUM AND LOW REGISTERS. EXAMPLES OF THIS ARE: (WITH CLARINET ALL KEYS DOWN - A MORE RESONANT CHAMBER)



ADDITIONALLY, THIS WORK USES TRANSIENT STATES OF PITCHED TO NON-PITCHED (OR NOISE AND AIR) MATERIAL. THIS OCCURS BY CHANGING THE MIXTURE OF AIRFLOW TO CENTEREDNESS OF TONE. INDICATIONS WILL RANGE FROM PITCH DOMINANCE, TO EQUAL PROPORTIONS OF PITCHED AND NON-PITCHED, TO NONPITCHED DOMINANCE. AN EXAMPLE:



GENERALLY, THE NONPITCH INDICATIONS ARE ABOVE THE STAVE AND THE THE PITCH INDICATIONS ARE BELOW THE STAVE.

OTHER TRANSIENT STATES INITIATED BY THE PERFORMERS' AIRFLOW, VOCAL TRACT OR VOCAL FOLDS ARE:



= LIP BUZZ (HORN), BOTH BY ITSELF AND WITH INSTRUMENT PITCH. WHEN COMBINED WITH INSTRUMENT PITCH, THE EMOUCHURE SHOULD BE SLIGHTLY OFF OF THE MOUTHPIECE.

= PHONATE THROUGH INSTRUMENT

barely make contact

= BARELY MAKE CONTACT WITH MOUTHPIECE. AN UNSTABLE TONE AND PITCH FOCUS SHOULD OCCUR

Bite Reed

= BITE REED, A PINCHED SOUND WILL OCCUR

Teeth on Reed

= TEETH ON REED, EMOUCHURE WITH TEETH ON REED

throat tremolo - $\#$

= THROAT TREMOLO. THIS REFERS TO A SERIES OF LIGHT AND QUICK GLOTTAL STOPS ("HA, HA"), OR WITH 'CATCH' IN THROAT.

x

= SLAP TONGUE, DIRECTLY ON TIP

TRANSIENT STATES INITIATED BY THE CONSTRUCTION OF THE INSTRUMENT

1/2 Valve

= 1/2 VALVE

■

= INDICATES A FINGERED BUT TONELESS SOUND

A Holy person falls into the Nile as a Pelican

$\text{♩} = 80$

C1 $8b$ *mf* *f* *p*

Horn *mf* *f* *p*

a tempo *no pitch* *accel.* *a tempo*

f *mp* *p* *mf* *p* *pp* *f* *n*

f *f* *f* *f* *f* *5* *tip buzz - no horn pitch barely make contact*

(b b) *(b 7)* *(b 7)* *(b 7)* *(7 b-1)*

Handwritten musical score for the first system, consisting of two staves. The top staff features a treble clef and a key signature of two sharps (F# and C#). It contains several measures of music with dynamic markings such as *mf*, *f*, and *pp*. A large, dense chord is written in the middle of the staff. The bottom staff has a bass clef and a key signature of one sharp (F#). It includes dynamic markings like *mp*, *f*, and *pp*, along with performance instructions such as "(horn pitch)", "lip buzz", and "1/2 Valve". A tempo marking of $\text{♩} = 108$ is located in the upper right corner of the system.

Handwritten musical score for the second system, consisting of three staves. The top staff has a treble clef and a key signature of two sharps. It contains notes with dynamic markings like *pp*, *f*, and *p*, and includes performance instructions such as "(p)" and "(X)(X)(X)". The middle staff has a bass clef and a key signature of one sharp, with dynamic markings like *pp* and *p*. The bottom staff has a treble clef and a key signature of one sharp, featuring a wavy line representing a vibrato or tremolo effect, followed by notes with dynamic markings like *pp*, *mf*, *f*, *p*, and *f*. Performance instructions include "ord.", "horn", "p", "mf", "Voice", and "f".

Handwritten musical score for the first system, featuring a trumpet (tr) and a voice part.

Trumpet (tr): The staff begins with a dynamic of *p*. It includes a 5:2 interval marking and a *f* dynamic. A large slur covers a passage that ends with a *mp* dynamic. Above the staff, there are notes with an "8" above them, possibly indicating octaves. The tempo is marked *accel.* with a metronome marking of $\text{♩} = 120$. The staff concludes with a *p* dynamic and a $\text{♩} = 120$ marking.

Voice: The staff starts with a *f* dynamic and includes a *mp* dynamic. It features a 5:3 interval marking and a *f* dynamic. The staff ends with a *f* dynamic.

Horn: The staff begins with a *f* dynamic and includes a *p* dynamic. It features a $\frac{1}{2}$ Valve marking with a *mf* dynamic and a *f* dynamic. The staff concludes with a *f* dynamic and a *full valve* marking.

Handwritten musical score for the second system, featuring a clarinet (cl) and a voice part.

Clarinet (cl): The staff begins with a *p* dynamic and includes a 5:2 interval marking. It features a *mf* dynamic and a *f* dynamic. Above the staff, there are notes with an "8" above them, possibly indicating octaves. The tempo is marked $\text{♩} = 108$. The staff concludes with a *f* dynamic.

Voice: The staff starts with a *f* dynamic and includes a *no pitch* marking. It features a *mp* dynamic, a *f* dynamic, and a *pp* dynamic. The staff concludes with a *f* dynamic and a *full Valve - 1/2 valve* marking.

Trumpet (tr): The staff begins with a *f* dynamic and includes a *p* dynamic. It features a *f* dynamic and a *pp* dynamic. The staff concludes with a *f* dynamic and a *1/2 valve* marking.

Handwritten musical score for two staves. The top staff is in treble clef and the bottom staff is in bass clef. The music features various dynamics including *f*, *mp*, *mf*, and *p*. There are several slurs and accents. Above the top staff, there are handwritten notes: "n", "#2", and a series of vertical lines with circles, possibly representing fingerings or breath marks. The bottom staff includes markings for "full 1/2 valve" and "f".

Handwritten musical score for two staves. The top staff is in treble clef and the bottom staff is in bass clef. The music features various dynamics including *f*, *mf*, and *p*. There are several slurs and accents. Above the top staff, there are handwritten notes: "n", "f", "n", "accel.", and "♩ = 108". The bottom staff includes markings for "Voice" and "p".

Handwritten musical score for two staves. The top staff features a complex melodic line with many accidentals and slurs, including a large slur over a series of notes. The bottom staff is labeled "horn" and "Voice" and contains a simpler melodic line. Performance markings include "accel" with a dashed line, "♩ = 80", and dynamic markings "p", "f", and "mf".

Handwritten musical score for two staves. The top staff has a few notes with a slur and a fermata. The bottom staff contains a melodic line with a slur and a fermata. Performance markings include "♩ = 58" and the instruction "barely make contact with lips" written above the notes. A dynamic marking "mf" is present below the staff.

Handwritten musical score for guitar, first system. The top staff is in treble clef and the bottom staff is in bass clef. The music features a melodic line in the treble and a supporting bass line. Annotations include "bite red" above the treble staff, "accel." with a dashed line above the treble staff, and "f" (forte) above the treble staff. A tempo marking "♩ = 70" is present. The bass staff starts with a dynamic marking "mp" (mezzo-piano). The piece concludes with a double bar line and a fermata.

Handwritten musical score for guitar, second system. The top staff is in treble clef and the bottom staff is in bass clef. The music continues with melodic and harmonic development. Annotations include "throat tremolo" and "ord" (arpeggio) above the treble staff, and "throat Tremolo" above the treble staff. Dynamic markings "f" (forte) are present in both staves. The piece concludes with a double bar line and a fermata.

throat tremolo or "bite"

$\text{♩} = 58$

throat tremolo

5:2

mp

lip buzz

accel - - - - - $\text{♩} = 80$

f

mute w/ leg

f

mp

f

accel. - - - - - 8 - 1 = 132

f *mf* *p* *f* *p*

tip base *horn* *horn* *voice* *horn* *voice*

throat tremolo *tip up* *cl.* *voice* *voice* *horn* *voice* *1/2 valve*

rit ----- ♩ = 60

♩ = 160
stap
Tongue

♩ = 60

Handwritten musical score for the first system. It consists of a treble staff and a bass staff. The treble staff contains a melodic line with various dynamics (mf, f, p) and articulation marks. The bass staff contains a rhythmic accompaniment with notes and rests. Annotations include "stap" and "Tongue" above the treble staff, and "synchronise mit" with arrows pointing to specific notes in both staves. Dynamic markings like "f" and "p" are used throughout. The piece starts with a "rit" (ritardando) and ends with a "♩ = 60" tempo marking.

Handwritten musical score for the second system. It consists of a treble staff and a bass staff. The treble staff contains a melodic line with dynamics (mf, f, p) and articulation marks. The bass staff contains a rhythmic accompaniment. Annotations include "not in synch" and "in synch" with arrows pointing to notes in both staves, indicating synchronization points. There are also "1.5''" markings above and below the staves. Dynamic markings like "f" and "p" are used. The piece starts with a "rit" and ends with a "♩ = 60" tempo marking.

rit. -----

$\text{♩} = 160$

perforato

f (air) *f* *f*

mf - no instrumental pitch - sensual

p (*b*-*p*-*p*) (*b*-*p*-*p*) (*b*-*p*-*p*) (*b*-*p*-*p*) a ho-ly

Tempo - ad lib

"rare breath"

per-son - - - - - falls in-to the Ni - - - - - lo as(z) - - - - -

♩ = 80

parhaments

(f)

a pe-ri--i--can

f (p)

(p)

f shout w/
roughness

Brute — tie — down — !

mf der hei--li--ge —

f

f

Mensch und so wei- - - - - zer- lus--zi--ge tie--gen —

♩ = 108

♩ = 58

f

p

$\frac{1}{2}$ valve - *f* - - - barely make contact

♩ = 100

f

mp

mp

f

mp

barely make contact

$\frac{1}{2}$ valve

5:2

5:3

Handwritten musical score for the first system. The top staff is in treble clef and contains a complex melodic line with many accidentals (sharps and naturals) and slurs. It includes dynamic markings such as p , f , and f^5 , along with a $> n$ marking. The bottom staff is in bass clef and provides harmonic accompaniment with notes and rests. It includes dynamic markings p and f , and the instruction "full valve ord" above a specific note. Both staves have a 5:2 ratio indicated below them.

Handwritten musical score for the second system. The top staff continues the complex melodic line with slurs and dynamic markings f and p . The bottom staff continues the harmonic accompaniment with dynamic markings f , pp , and p (no cresc). It also includes a $> n$ marking and a f dynamic marking.

Handwritten musical notation for the first system. The top staff is in treble clef and contains a series of six complex rhythmic patterns, each enclosed in a large oval. The bottom staff is in bass clef with a 7/8 time signature. Dynamics include *f*, *p*, and *pp*. A *1/2 valve* instruction is written above the bottom staff. A *5:2* ratio is noted at the end of the bottom staff.

Handwritten musical notation for the second system. The top staff is in treble clef and contains a series of complex rhythmic patterns, each enclosed in a large oval. The bottom staff is in bass clef with a 7/8 time signature. Dynamics include *mp*, *pp (no creak.)*, and *f*. An *8:3* ratio is noted above the bottom staff. A vertical sequence of notes is written above the right side of the top staff.

Handwritten musical notation on two staves. The top staff is in treble clef and the bottom staff is in bass clef. The tempo is marked as $\text{♩} = 108$. The music includes various notes, rests, and dynamic markings such as *mp* and *f*. There are several diagrams above the staves showing fingerings for notes, with labels like "teeth on reed" and "ord". A note in the top staff is marked with a sharp sign and a circled "A". The bottom staff features a note with a dynamic marking of *f* and a note with a dynamic marking of *p*. The piece concludes with a double bar line.

Handwritten musical notation on two staves. The top staff is in treble clef and the bottom staff is in bass clef. The music includes notes, rests, and dynamic markings such as *mp* and *p*. A note in the top staff is marked with a sharp sign and a circled "A". Above the top staff, there is a diagram showing fingerings for notes, with the label "teeth on reed". The bottom staff features a note with a dynamic marking of *p*. The piece concludes with a double bar line.