

# Trio e-moll

Allegro moderato, ma non brio. ♩ = 144

Ferdinand Thieriot, Op.90

Measures 1-4: Bass clef, C major key signature, common time. Starts with a forte (*f*) dynamic. Features a melodic line with slurs and accents, and a bass line with eighth notes.

Measures 5-8: Bass clef, C major key signature, common time. Measure 5 is marked with a '4' above it. Starts with a forte (*f*) dynamic. Features a melodic line with slurs and accents, and a bass line with eighth notes.

Measures 9-15: Treble clef, C major key signature, common time. Starts with a fortissimo (*ff*) dynamic. Features a melodic line with slurs and accents, and a bass line with eighth notes.

Measures 16-18: Bass clef, C major key signature, common time. Measure 16 is marked with a '1' above it. Starts with a forte (*f*) dynamic. Features a melodic line with slurs and accents, and a bass line with eighth notes.

Measures 19-24: Bass clef, C major key signature, common time. Measure 19 is marked with a '1' above it. Starts with a forte (*f*) dynamic. Features a melodic line with slurs and accents, and a bass line with eighth notes.

Measures 25-30: Bass clef, C major key signature, common time. Measure 25 is marked with a '1' above it. Starts with a fortissimo (*ff*) dynamic. Features a melodic line with slurs and accents, and a bass line with eighth notes.

Measures 31-37: Bass clef, C major key signature, common time. Measure 31 is marked with a '12' above it. Starts with a piano (*p*) dynamic. Features a melodic line with slurs and accents, and a bass line with eighth notes. Includes markings for *Pmf.* and *dolce espress.*

Measures 38-61: Bass clef, C major key signature, common time. Measure 38 is marked with a '1' above it. Starts with a piano (*p*) dynamic. Features a melodic line with slurs and accents, and a bass line with eighth notes.

Measures 62-65: Bass clef, C major key signature, common time. Measure 62 is marked with a '3' above it. Starts with a forte (*f*) dynamic. Features a melodic line with slurs and accents, and a bass line with eighth notes. Includes markings for *fp*.

68

*f* *p* *ff*

75

82

*f*

86

90

95

102

109

*p* *p*

117

*pizz.* *arco* *p* *cresc.* *dol. espress.*

137

*cresc.*

148

*fp* *fp* *f* *p* *f*

155

*f*

166 **f** **1** **3**

173 **f**

178 **ff** **fz** **p** **cresc.**

186 **poco rit.** **ff** **p** **pp** **f**

**Adagio.** ♩ = 60

194 **pp** **poco cresc.** **p** **cresc.**

204 **f** **p** **p cresc.**

209 **f** **p** **f** **p** **f**

213 **pizz.** **arco** **p** **pp** **f** **p** **f** **p** **f**

218 **f** **p** **tr**

222 **f** **p** **f** **mf**

226 **f** **mf** **f**

229 **fz** **1**

232 *pp* *p poco espress.* *f*

238 *p cresc.* *poco accel.* *rit.* *a tempo*

242 *f* *p* *p* *p*

248 *cresc.* *f* *p* *f*

255 *f* *rit.* *pp*

**Allegro giocoso. ♩. = 88**

263 *f*

272 *p* *cresc.* *f*

281 *p* *f*

292 *p* *cresc.*

303 *p* *f* *p* *f*

314 *p* *f* *fp*

324 *rit.* *a tempo* *pp* *f*

334 *p* *cresc.*

343 *f*

352 *p* *dim.* *pizz.* **1**

364 *arco* *p* *dim.* *p* *p*

370 *f*

376 *tranquillo* *p* *pizz.* *ppp* **1** **1**

385 *arco* *p* *p*

391 **1.** **2.**

396 *f* *p*

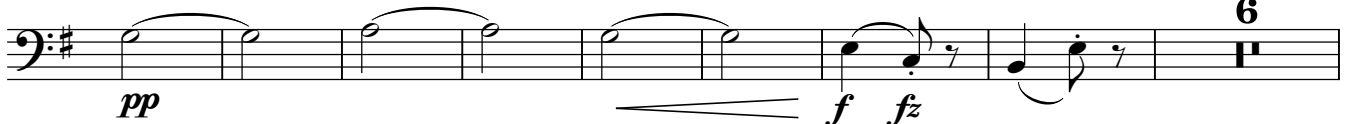
403 *f* *Tempo I.* **2** *Da Capo dal segno al Fine e poi la Coda*

412 *Coda* *pp* *cresc.* *pp* *cresc.*

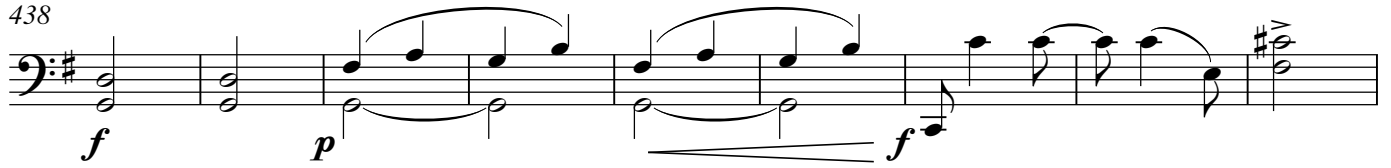
417 *fz* *f* **1** *fz* *f*

## Allegro non troppo. ♩ = 132

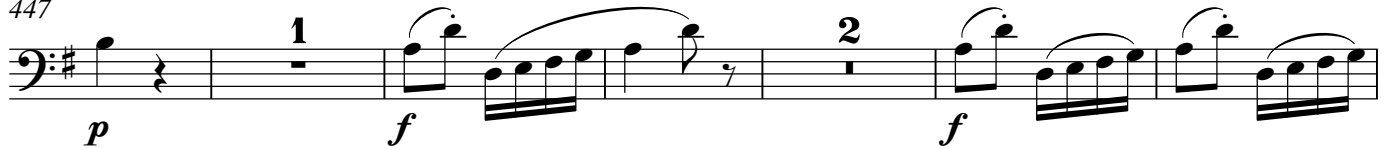
424



438



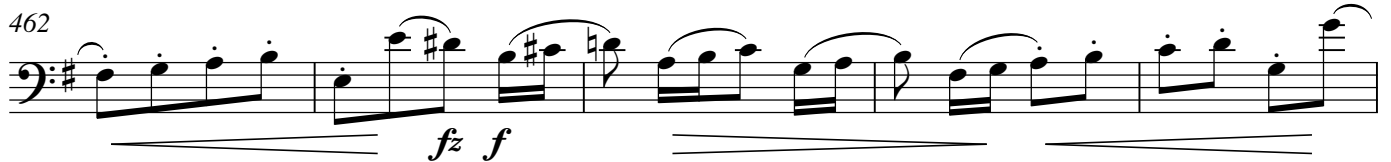
447



455



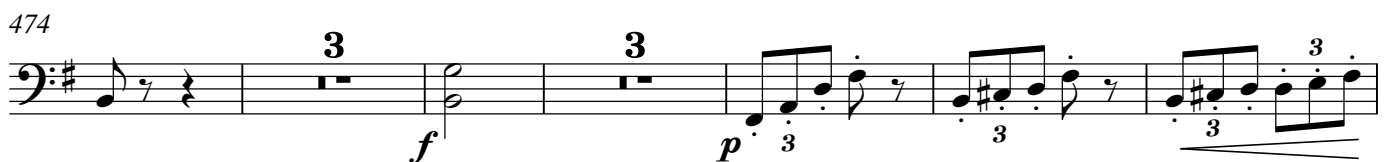
462



467



474



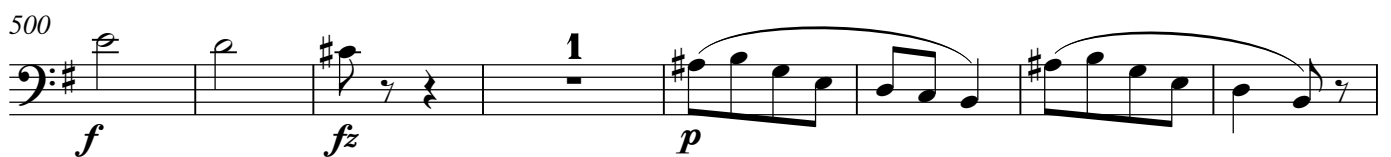
485



492



500



508



516

*f*

525

*f* 6

538

*pp* *cresc.*

544

*f* *p* *cresc.* *f*

553

*p* *cresc.* *f*

563

*p* *cresc.* *f*

572

*ff* *ff* 2

580

*p dolciss.*

588

*p* *cresc.* *f*

596

*p* *cresc.* *f*

603

*molto cresc.*

614 *ff*

619 *p*

625 *p* *f*

633 *ff*

640 *fz* *p*

650 *p* *f*

661

671 **10** Viol. *pp*

691 *f* *f*

702 *pizz.* *f* *p* *arco* **1** *pp* **2** *pp*

715 *pp* **2** *rit.*