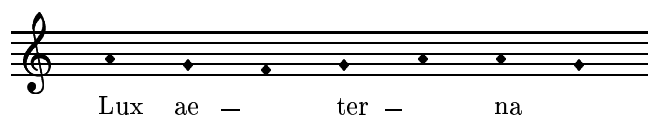


7. COMMUNIO

del Requiem a 4 voces (1583)

Transcripción: Felipe Pedrell

TOMÁS LUIS DE VICTORIA



Cantus

Altus

Tenor

Bassus

lu — ce — at e — is, Do —

lu — ce — at e — is, lu — ce — at e — is, Do —

lu — ce — at e — is, Do —

lu — ce — at e — is, lu — ce — at e — is, Do —

7

mi — ne. Cum San — ctis tu — is in

mi — ne. Cum San — ctis tu — is, cum San-ctis tu —

mi — ne. Cum San — ctis tu — is cum San-ctis tu — is in

mi — ne. Cum San-ctis tu — is, cum San-ctis tu — is, cum San-ctis tu —

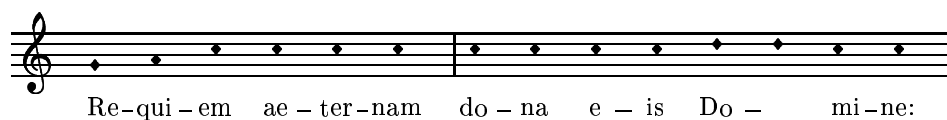
13

ae — ter — num: qui — a pi — us es.

-is in ae — ter- num: qui — a pi — us es.

ae — ter — num: qui — a pi — us es.

-is in ae — ter — num: qui — a pi — us es.



Cantus et lux per-pe-tu-a lu-ce-at e-

Altus et lux per-pe-tu-a lu-ce-at e-is, lu-ce-at e-

Tenor 8 et lux per-pe-tu-a lu-ce-at e-is, lu-ce-at

Bassus et lux per-pe-tu-a lu-ce-at e-is, lu-ce-at e-

7 is: cum San-ctis tu-is in

is: cum San-ctis tu-is, cum San-ctis tu-

8 e-is: cum San-ctis tu-is, cum San-ctis tu-is in

- is: cum San-ctis tu-is, cum San-ctis tu-is, cum San-ctis tu-

13 ae-ter-num: qui-a pi-us es.

-is in ae-ter-num: qui-a pi-us es.

8 ae-ter-num: qui-a pi-us es.

-is in ae-ter-num: qui-a pi-us es.