



26 THE VIRGINS MUSE

Tobias Hume

Handwritten musical notation on a single staff, starting with a bass clef, a key signature of one flat (B-flat), and a time signature of 4/2. The notation includes a whole note, a half note, and several quarter notes.

Handwritten musical notation on a single staff, continuing the piece with various note values and rests.

Handwritten musical notation on a single staff, featuring a repeat sign and various note values.

Handwritten musical notation on a single staff, including a repeat sign and a double bar line.

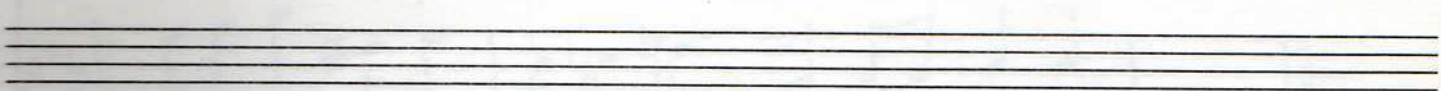
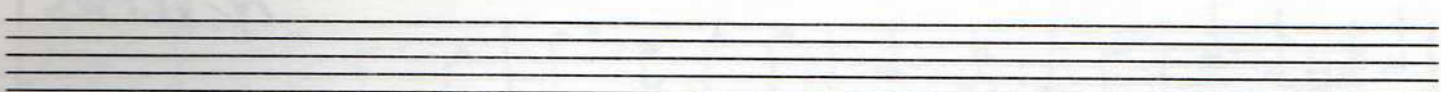
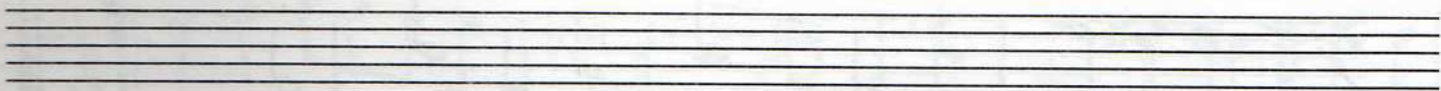
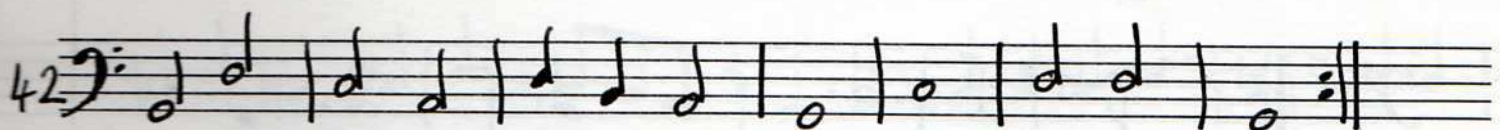
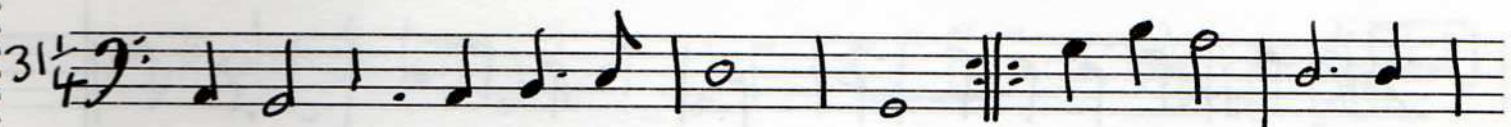
Handwritten musical notation on a single staff, continuing the melody with various note values.

Handwritten musical notation on a single staff, featuring a series of eighth notes and quarter notes.

Handwritten musical notation on a single staff, ending with a double bar line and the text "The Lady Arabella's Favourite." written below the staff.

Four sets of empty musical staves, each consisting of five lines, provided for further notation.

# The King of Denmarkes Delight



A MERRY CONCEIT Tobias Hume

Handwritten musical score for 'A Merry Conceit' by Tobias Hume. The score is written on eight staves in bass clef, with a key signature of one sharp (F#) and a 3/4 time signature. The music consists of a single melodic line. The notation includes various note values (quarter, eighth, and sixteenth notes), rests, and accidentals. The score is marked with measure numbers 7, 14, 20, 27, 33, 40, and 48. The piece concludes with a double bar line and repeat dots at the end of the eighth staff.

54

MY HOPE IS REVIVED Tobias Hume

4

8

12

15

MY JOYES ARE COMMING Tobias Hume  
The Lady of Suffolkes Delight

2#s →

8

17

The Lady of Bedfords Delight

# A MASKE

Tobias Hume

Handwritten musical score for 'A MASKE' by Tobias Hume. The score consists of eight staves of music, all in bass clef. The key signature is one flat (B-flat). The time signature is 6/8. The music is written in a single melodic line. The staves are numbered 1, 6, 11, 16, 21, 25, 29, and 35. The notation includes quarter notes, eighth notes, and sixteenth notes, along with rests and dynamic markings such as *f* and *f*. The piece concludes with a double bar line and repeat sign at measure 35, followed by the text 'The Earle of Surrex Delight'.

The Earle of Surrex Delight