

Suite 6

Ouverture

*Johann Kaspar
Ferdinand Fischer*

Musical score for Suite 6 Overture, measures 1-60. The score is written in treble clef, key of F major (one flat), and 2/2 time signature. The music consists of a single melodic line with various rhythmic patterns, including eighth and sixteenth notes, and rests. Measure numbers 7, 13, 20, 28, 36, 44, 52, and 60 are indicated at the start of their respective staves. There are two first and second endings marked with '1' and '2' above the staff lines. The first ending occurs at measure 13, and the second ending occurs at measure 60. The score ends with a double bar line and repeat dots.

Brandle



Musical score for Brandle, consisting of five staves of music in G major (one flat) and 3/4 time. The score includes measure numbers 6, 13, 19, 25, and 33. The piece concludes with a double bar line and repeat signs. The final measure of the second ending is marked 'Gay' and is in 3/4 time.

Amener



Musical score for Amener, consisting of three staves of music in G major (one flat) and 3/4 time. The score includes measure numbers 8 and 16. The piece concludes with a double bar line and repeat signs.

Gavotte



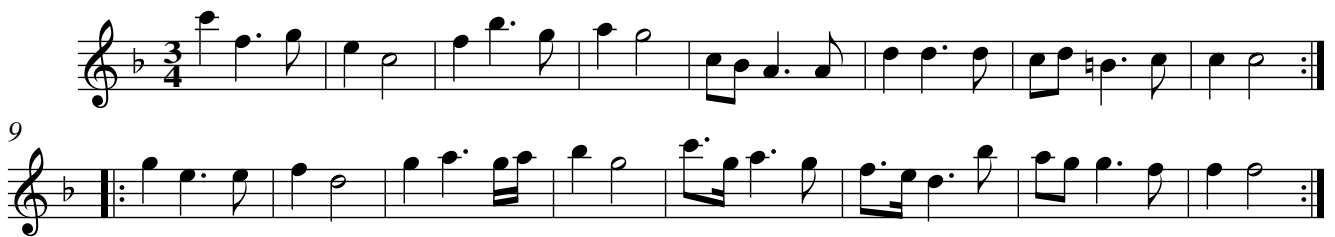
Musical score for Gavotte, consisting of two staves of music in G major (one flat) and 3/4 time. The score includes measure number 6. The piece concludes with a double bar line and repeat signs.

Courante



Musical score for Courante, 3/2 time signature, one flat. The score consists of three staves. The first staff contains measures 1-4. The second staff contains measures 5-8, with a repeat sign at the beginning of measure 5. The third staff contains measures 9-12, with a repeat sign at the end of measure 12.

Sarabande



Musical score for Sarabande, 3/4 time signature, one flat. The score consists of two staves. The first staff contains measures 1-8. The second staff contains measures 9-16, with a repeat sign at the beginning of measure 9.

Bourrée



Musical score for Bourrée, 3/4 time signature, one flat. The score consists of three staves. The first staff contains measures 1-4. The second staff contains measures 5-10, with a repeat sign at the end of measure 10. The third staff contains measures 11-16, with a repeat sign at the end of measure 16.

Menuet

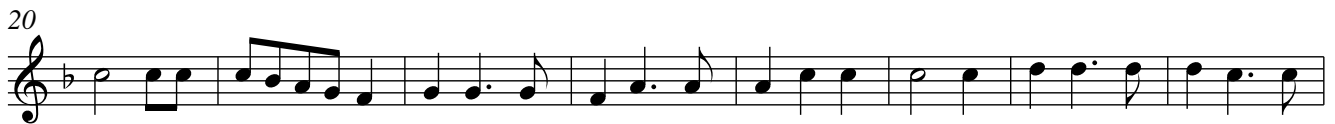
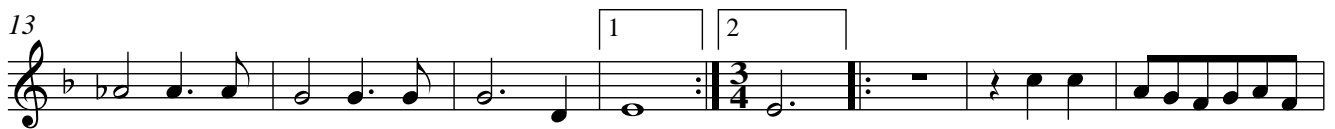


Musical score for Menuet, 3/4 time signature, one flat. The score consists of two staves. The first staff contains measures 1-8, with first and second endings marked at the end of measure 8. The second staff contains measures 9-16, with first and second endings marked at the end of measure 16.

Suite 6

Ouverture

*Johann Kaspar
Ferdinand Fischer*



Brandle

6

13

19

25

33

1 2 Gay

1 2

Detailed description: The score for 'Brandle' consists of five staves of music. The first staff begins with a treble clef, a key signature of one flat (F major), and a common time signature. The second staff starts at measure 6. The third staff starts at measure 13. The fourth staff starts at measure 19 and includes two first endings (marked '1') and a second ending (marked '2') labeled 'Gay', which changes the time signature to 3/4. The fifth staff starts at measure 25 and includes two first endings (marked '1') and a second ending (marked '2') with a fermata over the final note.

Amener

8

16

Detailed description: The score for 'Amener' consists of three staves of music. The first staff begins with a treble clef, a key signature of one flat (F major), and a 3/4 time signature. The second staff starts at measure 8. The third staff starts at measure 16.

Gavotte

6

Detailed description: The score for 'Gavotte' consists of two staves of music. The first staff begins with a treble clef, a key signature of one flat (F major), and a common time signature. The second staff starts at measure 6.

Courante

Musical score for Courante, measures 1-9. The piece is in 3/2 time and B-flat major. It consists of three staves of music. The first staff contains measures 1-4, the second staff contains measures 5-8, and the third staff contains measures 9-12. The piece ends with a double bar line and repeat dots.

Sarabande

Musical score for Sarabande, measures 1-9. The piece is in 3/4 time and B-flat major. It consists of two staves of music. The first staff contains measures 1-8, and the second staff contains measures 9-12. The piece ends with a double bar line and repeat dots.

Bourrée

Musical score for Bourrée, measures 1-11. The piece is in 3/4 time and B-flat major. It consists of three staves of music. The first staff contains measures 1-4, the second staff contains measures 5-10, and the third staff contains measures 11-14. The piece ends with a double bar line and repeat dots.

Menuet

Musical score for Menuet, measures 1-9. The piece is in 3/4 time and B-flat major. It consists of two staves of music. The first staff contains measures 1-8, and the second staff contains measures 9-12. The piece ends with a double bar line and repeat dots. First and second endings are indicated by boxes labeled '1' and '2' above the notes.

Suite 6

Ouverture

*Johann Kaspar
Ferdinand Fischer*



Brandle

6

13

19

25

33

Amener

8

16

Gavotte

4

8

Taille (Viola alto)
Courante

Measures 1-9 of the Courante. The piece is in 3/2 time and B-flat major. The notation consists of three staves. The first staff contains measures 1-4, the second staff contains measures 5-8, and the third staff contains measures 9-12. The piece concludes with a double bar line and repeat dots.

Sarabande

Measures 1-9 of the Sarabande. The piece is in 3/4 time and B-flat major. The notation consists of two staves. The first staff contains measures 1-8, and the second staff contains measures 9-12. The piece concludes with a double bar line and repeat dots.

Bourrée

Measures 1-11 of the Bourrée. The piece is in 3/4 time and B-flat major. The notation consists of three staves. The first staff contains measures 1-4, the second staff contains measures 5-8, and the third staff contains measures 9-11. The piece concludes with a double bar line and repeat dots.

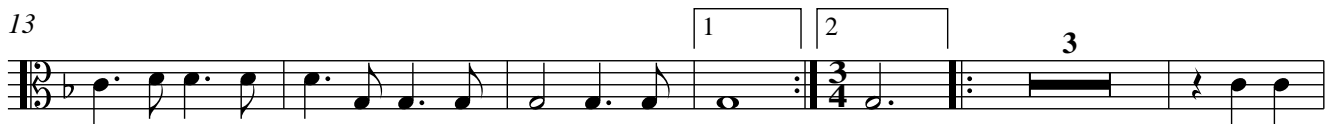
Menuet

Measures 1-12 of the Menuet. The piece is in 3/4 time and B-flat major. The notation consists of two staves. The first staff contains measures 1-6, and the second staff contains measures 7-12. The piece concludes with a double bar line and repeat dots. First and second endings are indicated by boxes labeled '1' and '2' above the notes.

Suite 6

Ouverture

*Johann Kaspar
Ferdinand Fischer*



Brandle

6

13

19

25

33

1 2 Gay

3/4

Detailed description: This block contains the musical score for the piece 'Brandle'. It consists of five staves of music. The first staff starts at measure 6. The second staff ends at measure 13. The third staff ends at measure 19. The fourth staff ends at measure 25 and includes a first ending bracket labeled '1' and a second ending bracket labeled '2' with the word 'Gay' written below it. The fifth staff ends at measure 33 and includes a first ending bracket labeled '1' and a second ending bracket labeled '2' with a fermata above it. The key signature is one flat (B-flat) and the time signature is 3/4.

Amener

8

16

Detailed description: This block contains the musical score for the piece 'Amener'. It consists of two staves of music. The first staff starts at measure 8. The second staff ends at measure 16. The key signature is one flat (B-flat) and the time signature is 3/4.

Gavotte

6

Detailed description: This block contains the musical score for the piece 'Gavotte'. It consists of two staves of music. The first staff starts at measure 6. The second staff ends at measure 12. The key signature is one flat (B-flat) and the time signature is 3/4.

Courante

5

9

Sarabande

9

Bourrée

5

11

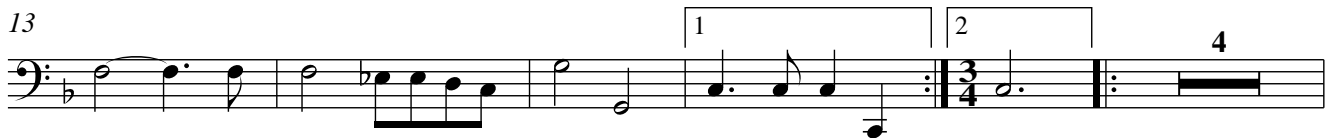
Menuet

9

Suite 6

Ouverture

*Johann Kaspar
Ferdinand Fischer*



Brandle

Musical score for 'Brandle' in bass clef, 2/4 time signature, key of B-flat major. The score consists of five staves of music. The first staff starts at measure 6. The second staff starts at measure 13. The third staff starts at measure 19 and includes a first ending bracket labeled '1' and a second ending bracket labeled '2' with the word 'Gay' written below it. The fourth staff starts at measure 25. The fifth staff starts at measure 33 and includes a first ending bracket labeled '1' and a second ending bracket labeled '2' with a fermata above it.

Amener

Musical score for 'Amener' in bass clef, 3/4 time signature, key of B-flat major. The score consists of three staves of music. The first staff starts at measure 8. The second staff starts at measure 16. The third staff starts at measure 24.

Gavotte

Musical score for 'Gavotte' in bass clef, 2/4 time signature, key of B-flat major. The score consists of two staves of music. The first staff starts at measure 6. The second staff starts at measure 12.

Courante

5

9

The Courante piece is written in bass clef with a 3/2 time signature and a key signature of one flat (B-flat). It consists of three staves of music. The first staff contains the first five measures. The second staff contains measures 6 through 8, with a repeat sign at the end. The third staff contains measures 9 through 11, also ending with a repeat sign.

Sarabande

9

The Sarabande piece is written in bass clef with a 3/4 time signature and a key signature of one flat (B-flat). It consists of two staves of music. The first staff contains measures 1 through 8. The second staff contains measures 9 through 16, with a repeat sign at the end.

Bourrée

5

11

The Bourrée piece is written in bass clef with a 3/4 time signature and a key signature of one flat (B-flat). It consists of three staves of music. The first staff contains measures 1 through 4. The second staff contains measures 5 through 10, with a repeat sign at the end. The third staff contains measures 11 through 16, also ending with a repeat sign.

Menuet

9

The Menuet piece is written in bass clef with a 3/4 time signature and a key signature of one flat (B-flat). It consists of two staves of music. The first staff contains measures 1 through 8, with first and second endings marked above the final two measures. The second staff contains measures 9 through 16, also with first and second endings marked above the final two measures.