

This work (Sphragidion - 5. per pianoforte) is licensed under the Creative Commons Attribution-Non-Commercial-NoDerivs 3.0 Unported Licence.

To view a copy of this licence, visit:

<http://creativecommons.org/licences/by-nc-nd/3.0>

or:

<http://creativecommons.org/licences/by-nc-nd/3.0/legalcode>

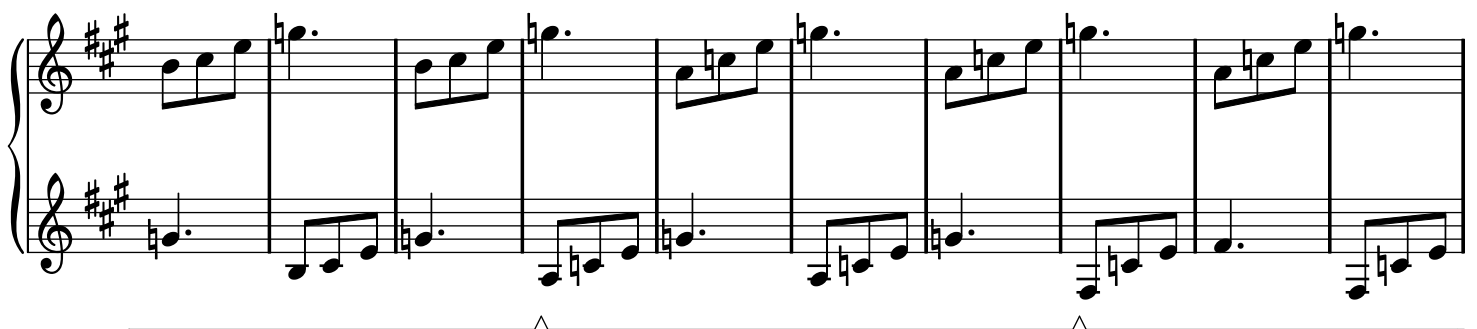
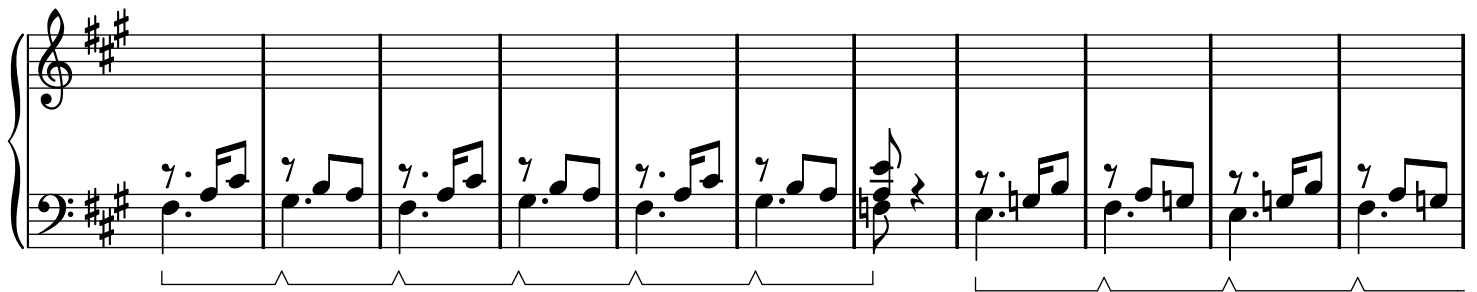
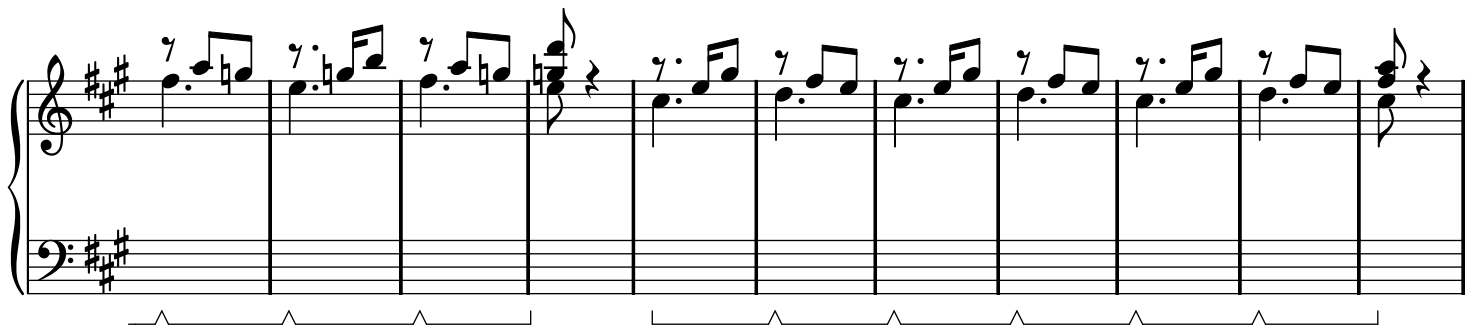
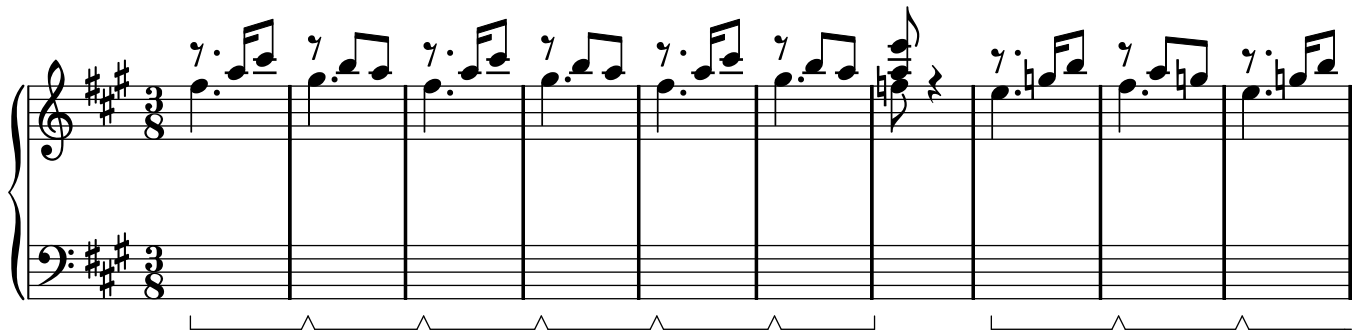
Copyright 2007 by Elia Alessandro Calderan.

Cover design by Elia Alessandro Calderan.

Sphragidion - 5.

Elia Alessandro Calderan

Con brio



This page contains six systems of musical notation for a piano piece. The key signature is D major, indicated by two sharps (F# and C#). The notation is written for piano, with a grand staff (treble and bass clefs) for each system. The music features a variety of note values, including eighth and sixteenth notes, as well as rests. Dynamic markings such as 'p' (piano) and 'f' (forte) are used throughout. The piece concludes with a final cadence in the last system.

System 1: Treble clef has a series of eighth notes and dotted half notes. Bass clef has a series of eighth notes and dotted half notes. A bracket spans the first four measures.

System 2: Treble clef has a series of eighth notes and dotted half notes. Bass clef has a series of eighth notes and dotted half notes. A bracket spans the first four measures.

System 3: Treble clef has a series of eighth notes and dotted half notes. Bass clef has a series of eighth notes and dotted half notes. A bracket spans the first four measures.

System 4: Treble clef has a series of eighth notes and dotted half notes. Bass clef has a series of eighth notes and dotted half notes. A bracket spans the first four measures.

System 5: Treble clef has a series of eighth notes and dotted half notes. Bass clef has a series of eighth notes and dotted half notes. A bracket spans the first four measures.

System 6: Treble clef has a series of eighth notes and dotted half notes. Bass clef has a series of eighth notes and dotted half notes. A bracket spans the first four measures.

The image displays four systems of musical notation for piano, each consisting of a treble and bass staff. The key signature is D major (two sharps) and the time signature is 4/4. The notation includes various chords, single notes, and rests. Some measures contain triplets or beamed notes. Brackets are used to group measures across systems, indicating a continuous melodic or harmonic line. The first system has 10 measures, the second and third have 9 measures each, and the fourth has 9 measures, ending with a double bar line.

The typesetting has been realized only with free softwares namely Lilypond, Emacs, Inkscape and Ghostscript. Many thanks to the teams (authors, programmers, community...) of these softwares.