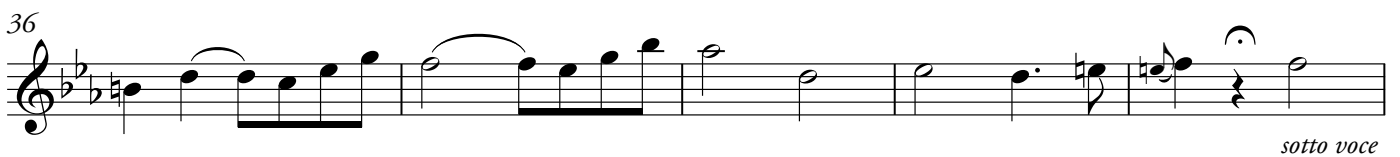
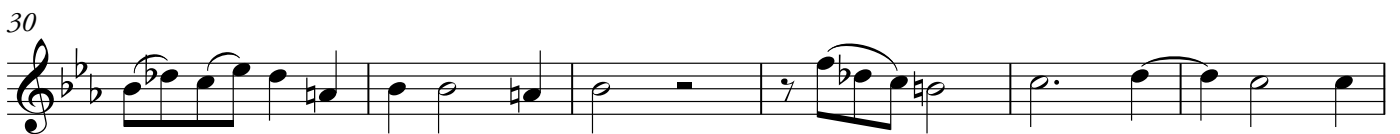


Violin I

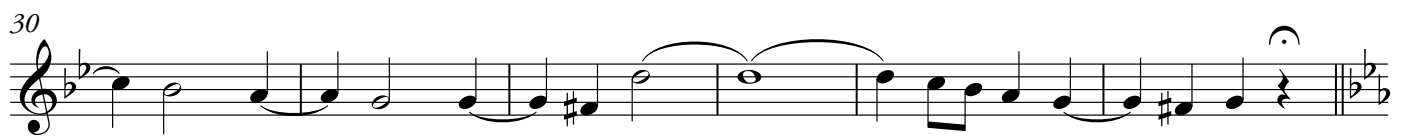
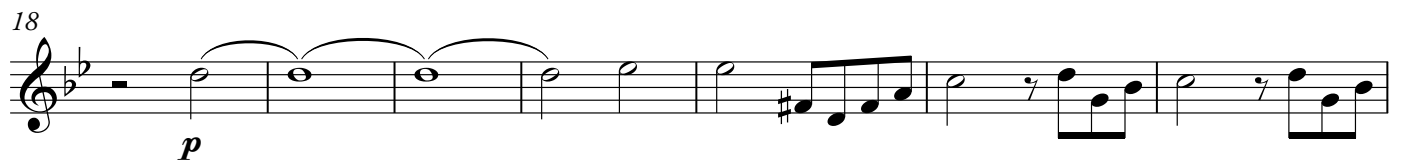
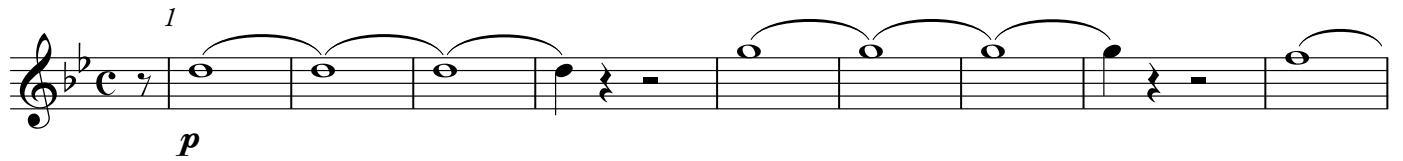
1. Salve Regina

Giovanni Pergolesi

Largo



2. Ad te clamamus



53

58

62

66

3. Eia ergo, Advocata nostra

1 *Andante*

7

12

17

23

28

34

37

p

This section contains three staves of music. The first staff (measures 28-33) begins with a treble clef, a key signature of two flats, and a 4/4 time signature. It features a melodic line with eighth and sixteenth notes, starting with a dynamic marking of *p*. The second staff (measures 34-36) continues the melodic line with similar rhythmic values. The third staff (measures 37-42) concludes the section with a final melodic phrase ending in a fermata.

4. Et Jesum benedictum

1 Andante amoroso

6

12

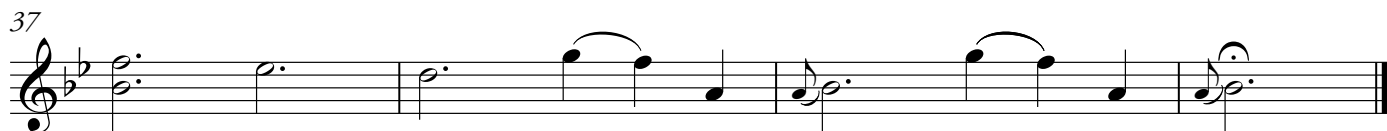
17

23

27

p

This section contains six staves of music for the piece 'Et Jesum benedictum'. The first staff (measures 1-5) is in a 6/4 time signature and features a slow, melodic line with half and quarter notes. The second staff (measures 6-11) continues the melody with a dynamic marking of *p*. The third staff (measures 12-16) shows further melodic development. The fourth staff (measures 17-22) includes a fermata over a long note. The fifth staff (measures 23-26) continues the melodic line. The sixth staff (measures 27-32) concludes the piece with a final melodic phrase and a fermata.



5. O Virgo Maria

