

Drei Duos

für Querflöte und Harfe

Gregor Peters-Rey

op. 1 (1984)

QUERFLÖTE

Baum im Herbst

Andante espressivo, Viertel ca. 78

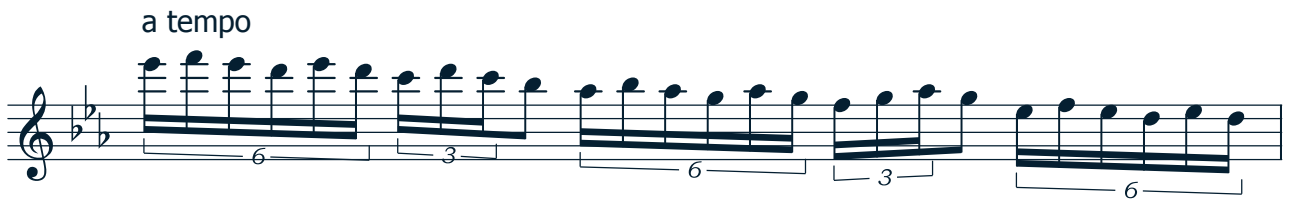
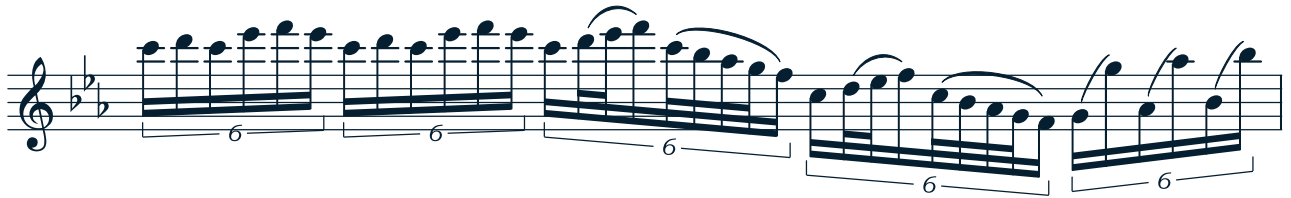
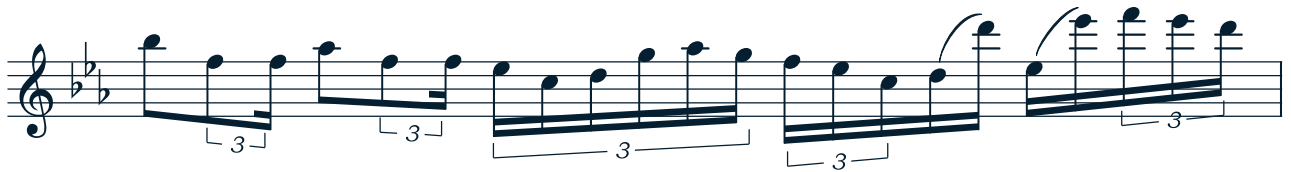
The musical score for the flute part of "Drei Duos" by Gregor Peters-Rey, titled "Baum im Herbst". The piece is in G minor (two flats) and 4/4 time. The tempo is "Andante espressivo" with a quarter note equal to approximately 78 beats per minute. The score consists of ten staves of music. It begins with a quarter rest followed by a series of eighth notes. The first staff contains a trill on the first note. The second staff continues with eighth notes and includes a trill. The third staff features eighth notes and a triplet of eighth notes. The fourth staff has eighth notes and triplets, with a change in time signature to 3/4 for the final measure of the staff. The fifth staff continues with eighth notes and a triplet. The sixth staff has eighth notes and a triplet. The seventh staff begins with a 5-measure rest, followed by eighth notes and a triplet. The eighth staff has eighth notes and a triplet. The ninth staff features eighth notes and triplets, with a change in time signature to 4/4 for the final measure. The tenth staff starts with eighth notes and triplets, followed by a "rit." (ritardando) marking and a final 8-measure rest.

Ostinato Duo

Adagio, Viertel ca. 42



Moderato,
Viertel ca. 54



Adagio, Viertel ca. 36



Impressionen eines Abends

Geschwind, Viertel ca. 80

4

rit.

Langsamer,
Viertel ca. 66

Punktierte Viertel ca. 60

13

Kadenz (leichtere Kadenz im Anhang) Viertel ca. 60

3/4

Tempo I

rit.

Leichtere Kadenz (Flöte solo)

Kontakt: peters-rey@web.dewww.copy-us.com