

FLORILEGIUM PRIMUM

Suite 1 – EUSEBIA

1. Ouverture

Georg Muffat

Viola tenore

5

10

15

20 **Allegro** 9

35

42 3

51

59

66 1 2

2. Air

7

13

3. Sarabande

Grave

6

12

4. Gigue I

8

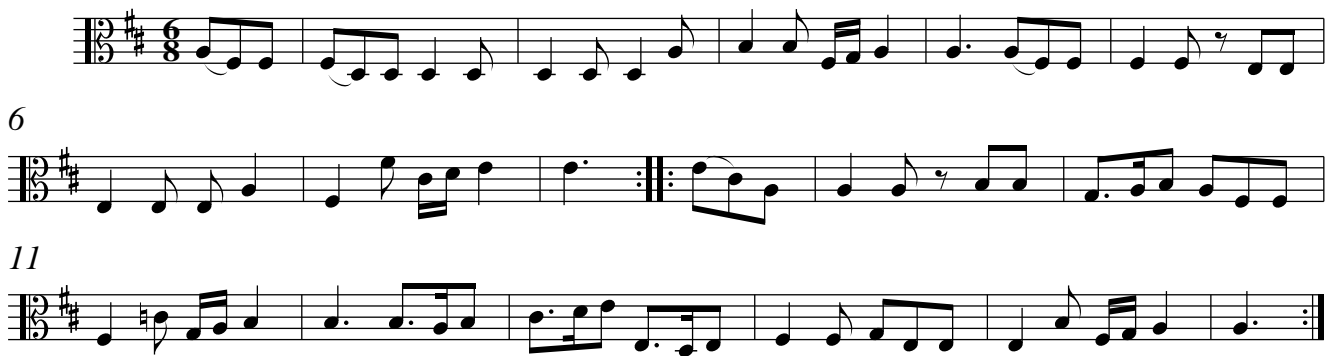
16

5. Gavotte



Musical score for Gavotte, Viola tenore. The piece is in G major (one sharp) and common time (C). It consists of three staves of music. The first staff contains measures 1 through 5. The second staff begins at measure 6 and includes a repeat sign at the end of the first phrase. The third staff begins at measure 11 and concludes the piece with a double bar line and repeat dots.

6. Gigue II



Musical score for Gigue II, Viola tenore. The piece is in G major (one sharp) and 6/8 time. It consists of three staves of music. The first staff contains measures 1 through 5. The second staff begins at measure 6 and includes a repeat sign at the end of the first phrase. The third staff begins at measure 11 and concludes the piece with a double bar line and repeat dots.

7. Menuet



Musical score for Menuet, Viola tenore. The piece is in G major (one sharp) and 3/4 time. It consists of three staves of music. The first staff contains measures 1 through 8. The second staff begins at measure 9 and includes a repeat sign at the start. The third staff begins at measure 17 and concludes the piece with a double bar line and repeat dots.

Suite 2 – SPERANTIS GAUDIA

1. Ouverture

Georg Muffat

5

10

15

20 **Presto**
5

29

34

39

44

49

55

2. Balet

Musical score for '2. Balet' in G minor, 2/2 time. The score consists of three staves. The first staff starts at measure 6. The second staff starts at measure 13. The third staff starts at measure 13 and includes a triplet of eighth notes in measure 15.

3. Bourrée

Musical score for '3. Bourrée' in G minor, 3/4 time. The score consists of three staves. The first staff starts at measure 7 and includes first and second endings. The second staff starts at measure 14. The third staff starts at measure 14.

4. Rondeau

Musical score for '4. Rondeau' in G minor, 3/4 time. The score consists of six staves. The first staff starts at measure 9. The second staff starts at measure 18. The third staff starts at measure 27. The fourth staff starts at measure 35. The fifth staff starts at measure 43. The sixth staff starts at measure 43.

5. Gavotte



Musical score for Gavotte, consisting of three staves of music in 2/4 time, key of B-flat major. The first staff starts at measure 1. The second staff starts at measure 4. The third staff starts at measure 8. The piece concludes with a double bar line and repeat dots.

6. Menuet I



Musical score for Menuet I, consisting of three staves of music in 3/4 time, key of B-flat major. The first staff starts at measure 1. The second staff starts at measure 7. The third staff starts at measure 14. The piece concludes with a double bar line and repeat dots.

7. Menuet II



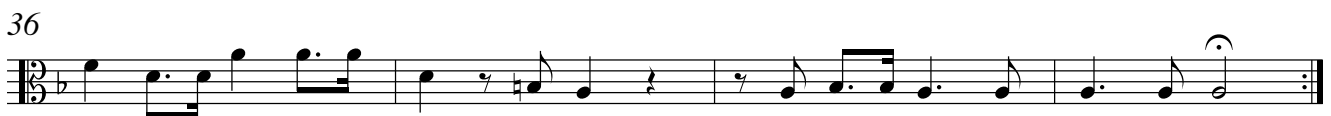
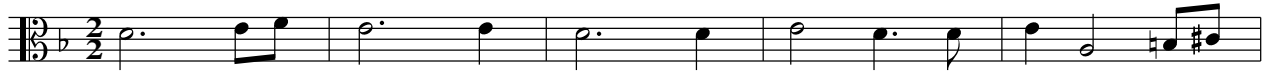
Musical score for Menuet II, consisting of three staves of music in 3/4 time, key of B-flat major. The first staff starts at measure 1. The second staff starts at measure 9. The third staff starts at measure 17. The piece concludes with a double bar line and repeat dots.

Menuet I da capo

Suite 3 – GRATITUDO

1. Ouverture

Georg Muffat



2. Balet



3. Air



4. Bourrée



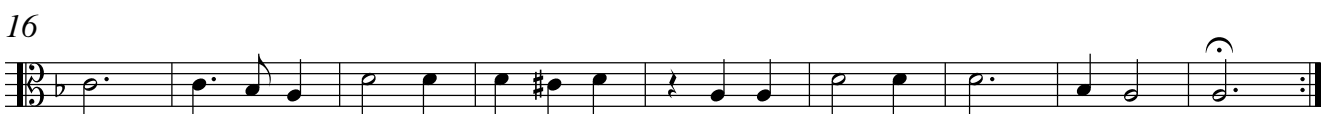
5. Gigue



6. Gavotte



7. Menuet



Suite 4 – IMPATIENTIA

1. Symphonie

Georg Muffat

Allegro



8



17

24 ² Grave

31



38



44



50



56



2. Balet

6

12

17

24

31

3. Canaries

6

12

4. Gigue

3

3

3

3

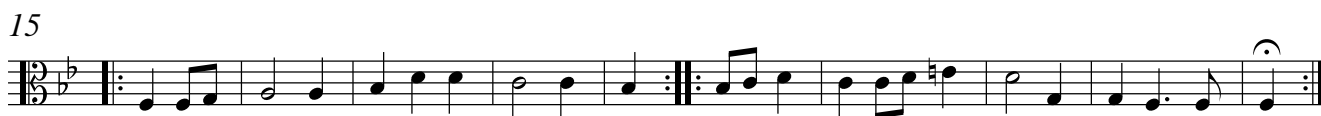
5. Sarabande



6. Bourrée



7. Chaconne



Suite 5 – SOLLICITUDO

1. Ouverture

Georg Muffat

5

10

15

Allegro
10

29

35

42

49

56

62

71

2. Allemande

Largo

4

8

12

3. Air

4

8

4. Gavotte

4

9

5. Menuet I



9



17



6. Menuet II



9



17



Menuet I da capo

7. Bourrée



4



8



2. Sarabande

Grave

Musical score for Sarabande, measures 1-14. The piece is in 3/4 time, key of D major, and marked Grave. The notation is in bass clef. Measure 14 includes a piano (*p*) dynamic marking.

3. Bourrée

Musical score for Bourrée, measures 1-18. The piece is in 3/4 time, key of D major. The notation is in bass clef. Measure 18 includes a fermata.

4. Chaconne

Musical score for Chaconne, measures 1-11. The piece is in 3/4 time, key of D major. The notation is in bass clef. Measure 11 includes a fermata.

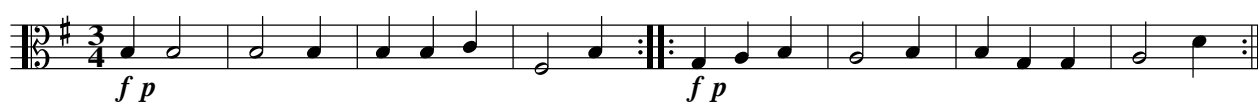
5. Gigue



6. Menuet



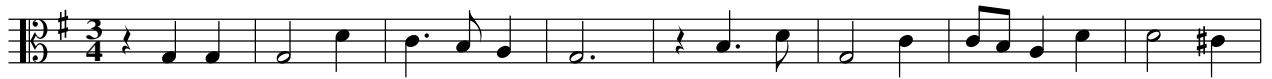
7. Echo



Suite 7 – CONSTANTIA

1. Air

Georg Muffat



2. Entrée des Fraudes



3. Entrée des Insultes

5

10

14 *Allegro*

21

28

4. Gavotte

4

8

5. Bourrée

7

14

6. Menuet I



7. Menuet II



Menuet I da capo

8. Gigue

