

FLORILEGIUM PRIMUM

Suite 1 – EUSEBIA

1. Ouverture

Georg Muffat

Violino 2/ Soprano 2

5

10

15

20 *Allegro*

28

35

42

50

57

64

2. Air

7

13

3. Sarabande

Grave

6

12

4. Gigue I

8

16

5. Gavotte



Musical score for Gavotte, consisting of three staves of music in G major (one sharp) and common time. The first staff contains measures 1 through 5. The second staff, starting at measure 6, contains measures 6 through 10 and includes a repeat sign. The third staff, starting at measure 11, contains measures 11 through 15 and ends with a double bar line and repeat dots.

6. Gigue II



Musical score for Gigue II, consisting of three staves of music in G major (one sharp) and 6/8 time. The first staff contains measures 1 through 5. The second staff, starting at measure 6, contains measures 6 through 10 and includes a repeat sign. The third staff, starting at measure 11, contains measures 11 through 15 and ends with a double bar line and repeat dots.

7. Menuet



Musical score for Menuet, consisting of three staves of music in G major (one sharp) and 3/4 time. The first staff contains measures 1 through 8. The second staff, starting at measure 9, contains measures 9 through 16 and includes a repeat sign. The third staff, starting at measure 17, contains measures 17 through 24 and ends with a double bar line and repeat dots.

Suite 2 – SPERANTIS GAUDIA

1. Ouverture

Georg Muffat

5

10

15

20 *Presto*

25

30

35

40

45

50

55

2. Balet

Musical score for '2. Balet' in G minor, 2/4 time. The score consists of three staves. The first staff starts at measure 1. The second staff starts at measure 6 and includes a repeat sign. The third staff starts at measure 13 and includes a triplet of eighth notes.

3. Bourrée

Musical score for '3. Bourrée' in G minor, 3/4 time. The score consists of three staves. The first staff starts at measure 1 and includes first and second endings. The second staff starts at measure 7. The third staff starts at measure 14.

4. Rondeau

Musical score for '4. Rondeau' in G minor, 3/4 time. The score consists of six staves. The first staff starts at measure 1. The second staff starts at measure 9. The third staff starts at measure 18. The fourth staff starts at measure 27. The fifth staff starts at measure 35. The sixth staff starts at measure 43.

5. Gavotte



Musical score for Gavotte, consisting of three staves of music in G minor (one flat) and 3/4 time. The first staff begins with a treble clef and a key signature of one flat. The second staff starts at measure 4, and the third staff starts at measure 8. The piece concludes with a double bar line and repeat dots.

6. Menuet I



Musical score for Menuet I, consisting of three staves of music in G minor (one flat) and 3/4 time. The first staff begins with a treble clef and a key signature of one flat. The second staff starts at measure 7, and the third staff starts at measure 14. The piece concludes with a double bar line and repeat dots.

7. Menuet II



Musical score for Menuet II, consisting of three staves of music in G minor (one flat) and 3/4 time. The first staff begins with a treble clef and a key signature of one flat. The second staff starts at measure 9, and the third staff starts at measure 17. The piece concludes with a double bar line and repeat dots.

Menuet I da capo

Suite 3 – GRATITUDO

1. Ouverture

Georg Muffat

6

12

18 *Allegro*

22

26

29

33

36

2. Balet

Musical score for '2. Balet' in G minor, 2/2 time. The score consists of three staves. The first staff contains measures 1 through 7. The second staff, starting at measure 8, includes first and second endings for measures 8-9. The third staff, starting at measure 16, concludes the piece with a fermata on the final note.

3. Air

Musical score for '3. Air' in G minor, 3/4 time. The score consists of three staves. The first staff contains measures 1 through 11. The second staff, starting at measure 12, continues the melody. The third staff, starting at measure 23, concludes the piece with a fermata on the final note.

4. Bourrée

Musical score for '4. Bourrée' in G minor, 3/4 time. The score consists of three staves. The first staff contains measures 1 through 8. The second staff, starting at measure 9, continues the melody. The third staff, starting at measure 16, concludes the piece with a fermata on the final note.

5. Gigue



Musical score for Gigue, measures 1-10. The piece is in 6/4 time and B-flat major. The notation consists of three staves. The first staff contains measures 1-4, the second staff contains measures 5-8, and the third staff contains measures 9-10. The piece concludes with a repeat sign and a fermata over the final note.

6. Gavotte



Musical score for Gavotte, measures 1-9. The piece is in 3/4 time and B-flat major. The notation consists of three staves. The first staff contains measures 1-4, the second staff contains measures 5-8, and the third staff contains measures 9-9. The piece concludes with a repeat sign and a fermata over the final note.

7. Menuet



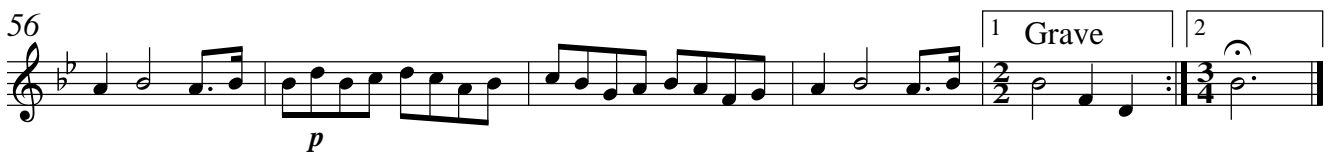
Musical score for Menuet, measures 1-16. The piece is in 3/4 time and B-flat major. The notation consists of three staves. The first staff contains measures 1-7, the second staff contains measures 8-15, and the third staff contains measures 16-16. The piece concludes with a repeat sign and a fermata over the final note.

Suite 4 – IMPATIENTIA

1. Symphonie

Georg Muffat

Allegro



2. Balet

Musical score for '2. Balet' in G minor, 3/4 time. The score consists of six staves of music. The first staff begins with a treble clef, a key signature of two flats (B-flat and E-flat), and a common time signature. The melody is written in a single line. The second staff is marked with a '6' at the beginning. The third staff is marked with a '12'. The fourth staff is marked with a '17'. The fifth staff is marked with a '24'. The sixth staff is marked with a '31'. The piece concludes with a double bar line and repeat dots.

3. Canaries

Musical score for '3. Canaries' in G minor, 3/4 time. The score consists of three staves of music. The first staff begins with a treble clef, a key signature of two flats, and a 3/4 time signature. The melody is written in a single line. The second staff is marked with a '6'. The third staff is marked with a '12'. The piece concludes with a double bar line and repeat dots.

4. Gigue

Musical score for '4. Gigue' in G minor, 3/4 time. The score consists of two staves of music. The first staff begins with a treble clef, a key signature of two flats, and a common time signature. The melody is written in a single line. The second staff is marked with a '3' at the beginning. The piece concludes with a double bar line and repeat dots.

5. Sarabande



6. Bourrée



7. Chaconne



Suite 5 – SOLLICITUDO

1. Ouverture

Georg Muffat

5

10

15

23

30

35

42

49

56

63

70

Allegro

1 2

3

1 2

2. Allemande

Largo



6

11

The Allemande is written in treble clef with a common time signature (C). It begins with a 'Largo' tempo marking. The first staff contains measures 1 through 5. The second staff, starting at measure 6, contains measures 6 through 10 and includes a repeat sign. The third staff, starting at measure 11, contains measures 11 through 15 and ends with a fermata over the final note.

3. Air



4

8

The Air is written in treble clef with a 6/8 time signature. The first staff contains measures 1 through 3. The second staff, starting at measure 4, contains measures 4 through 7 and includes a repeat sign. The third staff, starting at measure 8, contains measures 8 through 11 and ends with a fermata over the final note.

4. Gavotte



4

9

The Gavotte is written in treble clef with a common time signature (C). The first staff contains measures 1 through 3. The second staff, starting at measure 4, contains measures 4 through 8 and includes a repeat sign. The third staff, starting at measure 9, contains measures 9 through 11 and ends with a fermata over the final note.

5. Menuet I



6. Menuet II



Menuet I da capo

7. Bourrée



Suite 6 – BLANDITIAE

1. Ouverture

Georg Muffat

Violino 2
(Violetta)

7

13

1 2 Presto

18

22

26

30

34

38

p

2. Sarabande

Grave

7

14

p

Detailed description: This block contains the musical notation for the Sarabande. It consists of three staves of music in G major and 3/4 time. The first staff starts with the tempo marking 'Grave'. The second staff begins at measure 7 and includes a repeat sign. The third staff begins at measure 14 and includes a piano (*p*) dynamic marking. The piece concludes with a fermata over the final note.

3. Bourrée

7

13

19

Detailed description: This block contains the musical notation for the Bourrée. It consists of four staves of music in G major and 3/4 time. The first staff begins with a whole rest followed by the melody. The second staff starts at measure 7 and includes a repeat sign. The third staff starts at measure 13. The fourth staff starts at measure 19 and concludes with a fermata over the final note.

4. Chaconne

5

11

Detailed description: This block contains the musical notation for the Chaconne. It consists of three staves of music in G major and 3/4 time. The first staff begins with the melody. The second staff starts at measure 5 and includes a repeat sign. The third staff starts at measure 11 and concludes with a fermata over the final note.

5. Gigue

Musical score for Gigue, measures 1-13. The piece is in G major and 3/8 time. The notation consists of three staves of music. The first staff contains measures 1-5. The second staff, starting at measure 6, includes repeat signs at the beginning and end. The third staff, starting at measure 13, concludes the piece with a fermata on the final note.

6. Menuet

Musical score for Menuet, measures 1-17. The piece is in G major and 3/4 time. The notation consists of three staves of music. The first staff contains measures 1-8. The second staff, starting at measure 9, includes repeat signs at the beginning and end. The third staff, starting at measure 17, concludes the piece with a fermata on the final note.

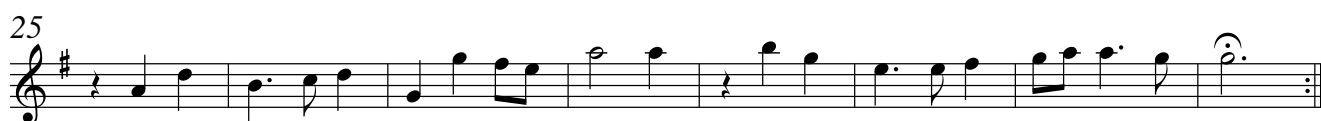
7. Echo

Musical score for Echo, measures 1-17. The piece is in G major and 3/4 time. The notation consists of three staves of music. The first staff contains measures 1-8 and includes dynamic markings *f p* and *f p*. The second staff, starting at measure 9, includes dynamic markings *f p*, *f*, and *p*. The third staff, starting at measure 17, includes dynamic markings *f*, *p*, and *f p*. The piece concludes with a fermata on the final note.

Suite 7 – CONSTANTIA

1. Air

Georg Muffat



2. Entrée des Fraudes



3. Entrée des Insultes

Musical score for "3. Entrée des Insultes" in G major, 3/4 time. The score consists of six staves of music. The first staff begins with a treble clef, a key signature of one sharp (F#), and a common time signature (C). The music starts with a whole rest, followed by a series of eighth and quarter notes. The second staff continues the melody. The third staff features a first ending bracket over the final two measures. The fourth staff begins with a second ending bracket and the tempo marking "Allegro". The fifth staff continues the rhythmic pattern. The sixth staff concludes with a first ending bracket and a final cadence.

4. Gavotte

Musical score for "4. Gavotte" in G major, 3/4 time. The score consists of three staves of music. The first staff begins with a treble clef, a key signature of one sharp (F#), and a common time signature (C). The music starts with a quarter note, followed by a series of eighth and quarter notes. The second staff continues the melody with a repeat sign at the beginning. The third staff concludes the piece with a final cadence.

5. Bourrée

Musical score for "5. Bourrée" in G major, 3/4 time. The score consists of three staves of music. The first staff begins with a treble clef, a key signature of one sharp (F#), and a common time signature (C). The music starts with a quarter note, followed by a series of eighth and quarter notes. The second staff continues the melody with a repeat sign at the beginning. The third staff concludes the piece with a final cadence.

6. Menuet I



7. Menuet II



Menuet I da capo

8. Gigue

