

# FLORILEGIUM PRIMUM

## Suite 1 – EUSEBIA

### 1. Ouverture

*Georg Muffat*

#### Violino 1/ Soprano 1

5

10

15

20 *Allegro*

28

35

42

50

57

64

## 2. Air

7

13

## 3. Sarabande

Grave

6

12

## 4. Gigue I

8

15

## 5. Gavotte



Musical score for Gavotte, measures 1-11. The piece is in G major (one sharp) and common time. The notation consists of three staves. The first staff contains measures 1-5. The second staff, starting at measure 6, contains measures 6-10 and includes a repeat sign. The third staff, starting at measure 11, contains measures 11-15 and ends with a double bar line and repeat dots.

## 6. Gigue II



Musical score for Gigue II, measures 1-11. The piece is in G major (one sharp) and 6/8 time. The notation consists of three staves. The first staff contains measures 1-5. The second staff, starting at measure 6, contains measures 6-10 and includes a repeat sign. The third staff, starting at measure 11, contains measures 11-15 and ends with a double bar line and repeat dots.

## 7. Menuet



Musical score for Menuet, measures 1-17. The piece is in G major (one sharp) and 3/4 time. The notation consists of three staves. The first staff contains measures 1-8. The second staff, starting at measure 9, contains measures 9-16 and includes a repeat sign. The third staff, starting at measure 17, contains measures 17-24 and ends with a double bar line and repeat dots.

## Suite 2 – SPERANTIS GAUDIA

## 1. Ouverture

*Georg Muffat*

5

10

15

20 *Presto*

25

30

35

40

45

50

55

## 2. Balet

Musical score for '2. Balet' in G minor, 2/4 time. The score consists of three staves. The first staff begins at measure 6. The second staff begins at measure 13. The third staff contains several triplet markings (indicated by a '3' below the notes) and ends with a double bar line and repeat dots.

## 3. Bourrée

Musical score for '3. Bourrée' in G minor, 3/4 time. The score consists of three staves. The first staff begins at measure 7 and includes first and second endings (marked '1' and '2'). The second staff begins at measure 14. The piece concludes with a double bar line and repeat dots.

## 4. Rondeau

Musical score for '4. Rondeau' in G minor, 3/4 time. The score consists of five staves. The first staff begins at measure 9. The second staff begins at measure 18. The third staff begins at measure 27. The fourth staff begins at measure 35. The fifth staff begins at measure 43. The piece concludes with a double bar line and repeat dots.

## 5. Gavotte



Musical score for Gavotte, consisting of three staves of music in G minor (one flat) and 3/4 time. The first staff begins with a treble clef and a common time signature. The second staff starts at measure 4, and the third staff starts at measure 8. The piece concludes with a double bar line and repeat dots.

## 6. Menuet I



Musical score for Menuet I, consisting of three staves of music in G minor (one flat) and 3/4 time. The first staff begins with a treble clef and a 3/4 time signature. The second staff starts at measure 7, and the third staff starts at measure 14. The piece concludes with a double bar line and repeat dots.

## 7. Menuet II



Musical score for Menuet II, consisting of three staves of music in G minor (one flat) and 3/4 time. The first staff begins with a treble clef and a 3/4 time signature. The second staff starts at measure 9, and the third staff starts at measure 17. The piece concludes with a double bar line and repeat dots.

Menuet I da capo

# Suite 3 – GRATITUDO

## 1. Ouverture

*Georg Muffat*



## 2. Balet

Musical score for '2. Balet' in G minor, 2/2 time. The score consists of three staves. The first staff contains measures 1 through 7. The second staff starts at measure 8 and includes first and second endings. The third staff starts at measure 16 and concludes the piece with a final cadence.

## 3. Air

Musical score for '3. Air' in G minor, 3/4 time. The score consists of three staves. The first staff contains measures 1 through 11. The second staff starts at measure 12 and continues the melody. The third staff starts at measure 23 and ends with a fermata.

## 4. Bourrée

Musical score for '4. Bourrée' in G minor, 3/4 time. The score consists of three staves. The first staff contains measures 1 through 8. The second staff starts at measure 9 and continues the melody. The third staff starts at measure 16 and concludes the piece with a fermata.



## 5. Gigue



Musical score for Gigue, measures 1-10. The piece is in 6/4 time and B-flat major. The first line (measures 1-4) features a melodic line with eighth and quarter notes. The second line (measures 5-8) continues the melody with eighth notes and quarter notes. The third line (measures 9-10) concludes the piece with a final cadence.

## 6. Gavotte



Musical score for Gavotte, measures 1-9. The piece is in 3/4 time and B-flat major. The first line (measures 1-4) shows a melodic line with eighth and quarter notes. The second line (measures 5-8) features a more rhythmic melody with eighth notes and quarter notes. The third line (measures 9) concludes the piece with a final cadence.

## 7. Menuet

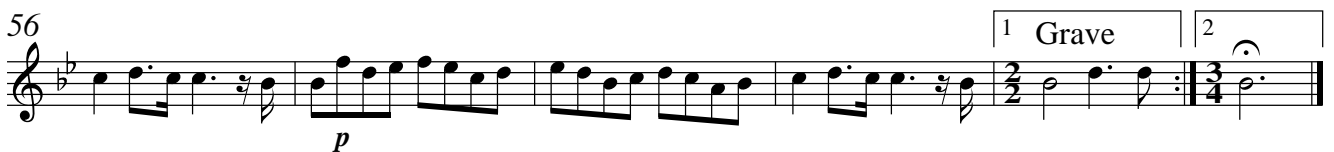


Musical score for Menuet, measures 1-16. The piece is in 3/4 time and B-flat major. The first line (measures 1-7) features a melodic line with eighth and quarter notes. The second line (measures 8-15) continues the melody with eighth notes and quarter notes. The third line (measures 16) concludes the piece with a final cadence.

## Suite 4 – IMPATIENTIA

## 1. Symphonie

Georg Muffat



## 2. Balet

Musical score for '2. Balet' in G minor, 3/4 time. The score consists of six staves of music. The first staff begins with a treble clef, a key signature of two flats (B-flat and E-flat), and a 3/4 time signature. The music features a mix of quarter, eighth, and sixteenth notes, with some rests. The second staff starts at measure 6. The third staff starts at measure 12 and ends with a double bar line. The fourth staff starts at measure 17 and includes a sharp sign (F#) above a note. The fifth staff starts at measure 24 and features eighth-note patterns. The sixth staff starts at measure 31 and includes a fermata over the final note.

## 3. Canaries

Musical score for '3. Canaries' in G minor, 3/4 time. The score consists of three staves of music. The first staff begins with a treble clef, a key signature of two flats, and a 3/4 time signature. The music is characterized by a steady eighth-note rhythm. The second staff starts at measure 6 and includes a repeat sign. The third staff starts at measure 12 and ends with a fermata over the final note.

## 4. Gigue

Musical score for '4. Gigue' in G minor, common time (C). The score consists of two staves of music. The first staff begins with a treble clef, a key signature of two flats, and a common time signature. The music features a complex rhythmic pattern with many triplets, indicated by the number '3' below the notes. The second staff starts at measure 3 and continues with more triplets, ending with a fermata over the final note.

## 5. Sarabande



## 6. Bourrée



## 7. Chaconne



## Suite 5 – SOLLICITUDO

## 1. Ouverture

*Georg Muffat*

5

10

15

21

28

35

42

49

56

63

70

Allegro

1 2

1 2

## 2. Allemande

Largo



5

10

Detailed description: This block contains the first ten measures of the Allemande. It is written in treble clef with a common time signature (C). The tempo is marked 'Largo'. The key signature has one sharp (F#). The music features a mix of eighth and sixteenth notes, with some rests and a repeat sign at measure 7. Measure numbers 5 and 10 are indicated at the start of their respective lines.

## 3. Air



4

9

Detailed description: This block contains the first nine measures of the Air. It is written in treble clef with a 6/8 time signature. The key signature has one sharp (F#). The music is characterized by a slow, steady pace with dotted rhythms and some grace notes. Measure numbers 4 and 9 are indicated at the start of their respective lines.

## 4. Gavotte



4

9

Detailed description: This block contains the first nine measures of the Gavotte. It is written in treble clef with a common time signature (C). The key signature has one sharp (F#). The music is more rhythmic than the previous pieces, featuring eighth and sixteenth notes. Measure numbers 4 and 9 are indicated at the start of their respective lines.

## 5. Menuet I

Musical score for Menuet I, measures 1-17. The piece is in 3/4 time and G major. It consists of three staves of music. The first staff contains measures 1-8, the second staff contains measures 9-16, and the third staff contains measures 17-18. The piece ends with a repeat sign.

## 6. Menuet II

Musical score for Menuet II, measures 1-17. The piece is in 3/4 time and G major. It consists of three staves of music. The first staff contains measures 1-8, the second staff contains measures 9-16, and the third staff contains measures 17-18. The piece ends with a repeat sign.

Menuet I da capo

## 7. Bourrée

Musical score for Bourrée, measures 1-8. The piece is in 3/4 time and G major. It consists of three staves of music. The first staff contains measures 1-3, the second staff contains measures 4-7, and the third staff contains measures 8-9. The piece ends with a repeat sign.

# Suite 6 – BLANDITIAE

## 1. Ouverture

*Georg Muffat*

7

13

1 2 Presto

18

22

26

30

34

38

*p*



## 2. Sarabande

Grave

7

14

*p*

Detailed description: This block contains the musical notation for the Sarabande. It consists of three staves of music in G major and 3/4 time. The first staff starts with the tempo marking 'Grave'. The second staff begins at measure 7 and includes a repeat sign. The third staff begins at measure 14 and ends with a piano (*p*) dynamic marking.

## 3. Bourrée

7

13

18

Detailed description: This block contains the musical notation for the Bourrée. It consists of four staves of music in G major and 3/4 time. The first staff is the beginning of the piece. The second staff begins at measure 7 and includes a repeat sign. The third staff begins at measure 13. The fourth staff begins at measure 18 and ends with a fermata over the final note.

## 4. Chaconne

5

11

Detailed description: This block contains the musical notation for the Chaconne. It consists of three staves of music in G major and 3/4 time. The first staff is the beginning of the piece. The second staff begins at measure 5 and includes a repeat sign. The third staff begins at measure 11 and ends with a fermata over the final note.

## 5. Gigue

Musical score for Gigue, measures 1-13. The piece is in G major and 3/8 time. It features a lively, rhythmic melody with frequent eighth and sixteenth notes. Measure numbers 6 and 13 are indicated at the start of their respective lines.

## 6. Menuet

Musical score for Menuet, measures 1-17. The piece is in G major and 3/4 time. It has a more graceful and flowing character than the Gigue. Measure numbers 9 and 17 are indicated at the start of their respective lines.

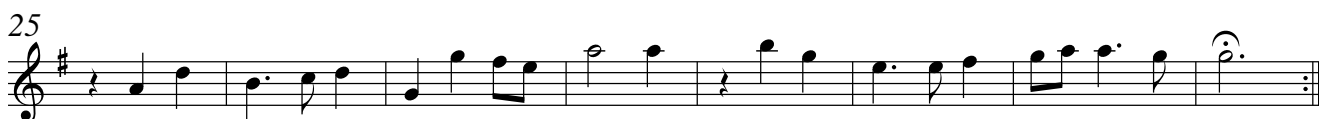
## 7. Echo

Musical score for Echo, measures 1-17. The piece is in G major and 3/4 time. It is characterized by its dynamic contrast, with frequent changes between forte (f) and piano (p) markings. Measure numbers 9 and 17 are indicated at the start of their respective lines.

# Suite 7 – CONSTANTIA

## 1. Air

*Georg Muffat*



## 2. Entrée des Fraudes



## 3. Entrée des Insultes

Musical score for '3. Entrée des Insultes' in G major, 3/4 time. The score consists of six staves of music. The first staff begins with a treble clef, a key signature of one sharp (F#), and a common time signature. The music features a mix of eighth and sixteenth notes. The second staff is marked with a '5' at the beginning. The third staff is marked with a '10' and contains a first ending bracket. The fourth staff is marked with a '14' and contains a second ending bracket; the tempo marking 'Allegro' is placed above this staff. The fifth staff is marked with a '21'. The sixth staff is marked with a '28' and contains two first ending brackets labeled '1' and '2'. The piece concludes with a double bar line.

## 4. Gavotte

Musical score for '4. Gavotte' in G major, 3/4 time. The score consists of three staves of music. The first staff begins with a treble clef, a key signature of one sharp (F#), and a common time signature. The music features a mix of eighth and sixteenth notes. The second staff is marked with a '4' and contains a first ending bracket. The third staff is marked with an '8' and concludes with a double bar line.

## 5. Bourrée

Musical score for '5. Bourrée' in G major, 3/4 time. The score consists of three staves of music. The first staff begins with a treble clef, a key signature of one sharp (F#), and a common time signature. The music features a mix of eighth and sixteenth notes. The second staff is marked with a '7' and contains a first ending bracket. The third staff is marked with a '14' and concludes with a double bar line.

## 6. Menuet I



## 7. Menuet II



Menuet I da capo

## 8. Gigue

