

# FLORILEGIUM PRIMUM

## Suite 1 – EUSEBIA

### 1. Ouverture

*Georg Muffat*

#### Viola alto

5

10

15

20 *Allegro* 5

33

41

50

58

64

## 2. Air

7

13

## 3. Sarabande

Grave

6

12

## 4. Gigue I

8

16

## 5. Gavotte

Musical score for Gavotte, measures 1-11. The piece is in G major (one sharp) and common time (C). The notation is for Viola Alto. Measure numbers 6 and 11 are indicated at the start of their respective lines.

## 6. Gigue II

Musical score for Gigue II, measures 1-11. The piece is in G major (one sharp) and 6/8 time. The notation is for Viola Alto. Measure numbers 6 and 11 are indicated at the start of their respective lines.

## 7. Menuet

Musical score for Menuet, measures 1-17. The piece is in G major (one sharp) and 3/4 time. The notation is for Viola Alto. Measure numbers 9 and 17 are indicated at the start of their respective lines.

## Suite 2 – SPERANTIS GAUDIA

## 1. Ouverture

*Georg Muffat*

5

10

15

20 *Presto*  
3

25

30

35

40

45

50

55

## 2. Balet

6

13

## 3. Bourrée

7

14

## 4. Rondeau

9

18

27

35

43

## 5. Gavotte

Musical score for Gavotte, measures 1-8. The score is written in G minor (one flat) and common time (C). It consists of three staves. The first staff contains measures 1-4, the second staff contains measures 5-7, and the third staff contains measure 8. The piece concludes with a double bar line and repeat dots.

## 6. Menuet I

Musical score for Menuet I, measures 1-14. The score is written in G minor (one flat) and 3/4 time. It consists of three staves. The first staff contains measures 1-6, the second staff contains measures 7-12, and the third staff contains measures 13-14. The piece concludes with a double bar line and repeat dots.

## 7. Menuet II

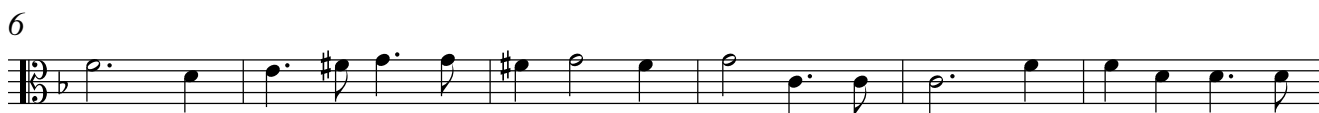
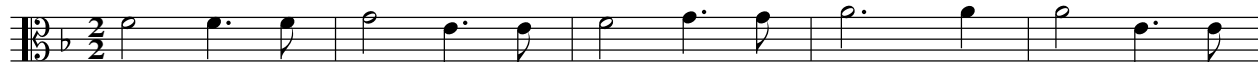
Musical score for Menuet II, measures 1-17. The score is written in G minor (one flat) and 3/4 time. It consists of three staves. The first staff contains measures 1-8, the second staff contains measures 9-16, and the third staff contains measure 17. The piece concludes with a double bar line and repeat dots.

Menuet I da capo

# Suite 3 – GRATITUDO

## 1. Ouverture

*Georg Muffat*



## 2. Balet



## 3. Air



## 4. Bourrée





## 5. Gigue



## 6. Gavotte



## 7. Menuet



# Suite 4 – IMPATIENTIA

## 1. Symphonie

Georg Muffat

Allegro



8



17



24 <sup>2</sup> Grave



31

Presto



38



44



50



56



## 2. Balet

6

12

17

24

31

## 3. Canaries

6

12

## 4. Gigue

3

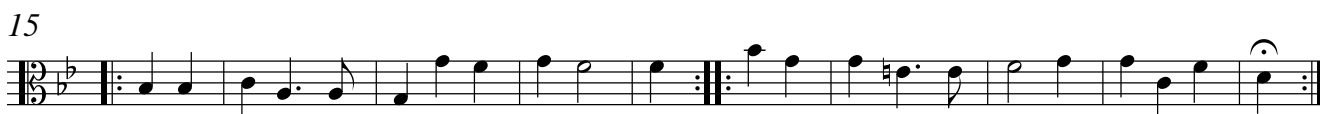
## 5. Sarabande



## 6. Bourrée



## 7. Chaconne



## Suite 5 – SOLLICITUDO

## 1. Ouverture

Georg Muffat

5

10

15

25

29

35

42

49

56

63

70

Allegro  
7

## 2. Allemande

Largo

Musical score for Allemande, measures 1-11. The score is written in bass clef with a common time signature (C). The tempo is marked 'Largo'. The key signature has one sharp (F#). The first line contains measures 1-5. The second line, starting at measure 6, contains measures 6-10. The third line, starting at measure 11, contains measures 11-15. The piece concludes with a double bar line and repeat dots.

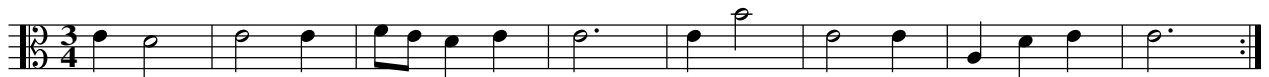
## 3. Air

Musical score for Air, measures 1-8. The score is written in bass clef with a 6/8 time signature. The key signature has one sharp (F#). The first line contains measures 1-3. The second line, starting at measure 4, contains measures 4-7. The third line, starting at measure 8, contains measures 8-11. The piece concludes with a double bar line and repeat dots.

## 4. Gavotte

Musical score for Gavotte, measures 1-9. The score is written in bass clef with a common time signature (C). The key signature has one sharp (F#). The first line contains measures 1-3. The second line, starting at measure 4, contains measures 4-8. The third line, starting at measure 9, contains measures 9-11. The piece concludes with a double bar line and repeat dots.

## 5. Menuet I



## 6. Menuet II



Menuet I da capo

## 7. Bourrée



## Suite 6 – BLANDITIAE

## 1. Ouverture

*Georg Muffat*

7

13

19

23

27

31

35

39

*p*

1 2

Presto  
2



## 2. Sarabande

Grave



7

14

*p*

Detailed description: This block contains the first 14 measures of the Sarabande. It is written in 3/4 time with a key signature of one sharp (F#). The tempo is marked 'Grave'. The notation includes a first ending bracket at measure 7 and a dynamic marking of 'p' (piano) at measure 14. The piece concludes with a fermata over the final note.

## 3. Bourrée



6

12

18

Detailed description: This block contains the first 18 measures of the Bourrée. It is written in 3/4 time with a key signature of one sharp (F#). The notation includes a first ending bracket at measure 6 and a fermata over the final note at measure 18.

## 4. Chaconne



5

11

Detailed description: This block contains the first 11 measures of the Chaconne. It is written in 3/4 time with a key signature of one sharp (F#). The notation includes a first ending bracket at measure 5 and a fermata over the final note at measure 11.

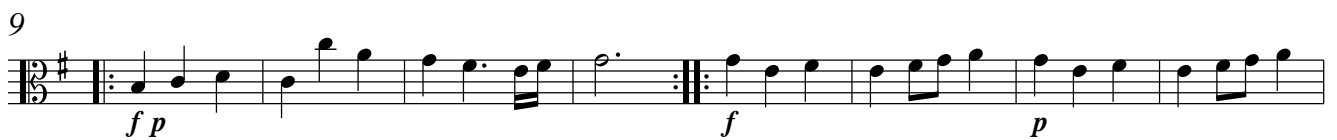
## 5. Gigue



## 6. Menuet



## 7. Echo



# Suite 7 – CONSTANTIA

## 1. Air

*Georg Muffat*



## 2. Entrée des Fraudes



## 3. Entrée des Insultes

5

10

14 *Allegro*

21

28

## 4. Gavotte

4

8

## 5. Bourrée

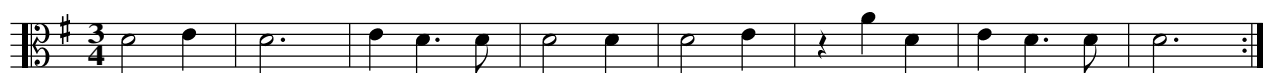
7

14

## 6. Menuet I



## 7. Menuet II



Menuet I da capo

## 8. Gigue

