

Concert pour quatre parties de violes

Marc Antoine Charpentier (1634-1704), H 545

Bearbeitung für Doppelrohrquartett

Oboe

Prelude 1

Musical score for Oboe, Prelude 1, measures 1-27. The score is written in treble clef, 2/2 time signature, and B-flat major. It consists of four staves of music. The first staff contains measures 1-8. The second staff contains measures 9-17. The third staff contains measures 18-26. The fourth staff contains measures 27-30. The music features a mix of quarter, eighth, and sixteenth notes, with some rests and phrasing slurs.

Prelude 2

Musical score for Oboe, Prelude 2, measures 1-17. The score is written in treble clef, common time (C), and B-flat major. It consists of five staves of music. The first staff contains measures 1-4. The second staff contains measures 5-8, with first and second endings. The third staff contains measures 9-11, with first and second endings. The fourth staff contains measures 12-16. The fifth staff contains measures 17-18, with first and second endings. The music features a mix of quarter, eighth, and sixteenth notes, with some rests and phrasing slurs.

Sarabande

Musical score for Sarabande, Oboe part, measures 1-35. The piece is in 3/4 time and B-flat major. The score consists of six staves of music. Measure numbers 9, 17, 25, 30, and 35 are indicated at the beginning of their respective staves. Trills (tr) are marked above measures 1, 17, and 35. The piece concludes with a double bar line and repeat dots.

Gigue angloise

Musical score for Gigue angloise, Oboe part, measures 1-35. The piece is in 3/4 time and B-flat major. The score consists of five staves of music. Measure numbers 10, 18, 26, and 35 are indicated at the beginning of their respective staves. The piece features first and second endings (1. and 2.) at the end of the second staff. The score concludes with a double bar line and repeat dots.

Gigue francoise

Musical score for Gigue francoise, Oboe part. The piece is in 3/4 time and B-flat major. It consists of four staves of music. The first staff contains measures 1-7. The second staff contains measures 8-13, with first and second endings marked above measures 11 and 12. The third staff contains measures 14-19. The fourth staff contains measures 20-25, ending with a double bar line and repeat dots.

Passecaille

Musical score for Passecaille, Oboe part. The piece is in 3/4 time and B-flat major. It consists of ten staves of music. The first staff contains measures 1-7. The second staff contains measures 8-15. The third staff contains measures 16-22, with a trill (tr) above measure 16. The fourth staff contains measures 23-31. The fifth staff contains measures 32-40, with a trill (tr) above measure 32. The sixth staff contains measures 41-46. The seventh staff contains measures 47-53. The eighth staff contains measures 54-60, with a fermata (f) above measure 54. The ninth staff contains measures 61-66, with a fermata (f) above measure 61. The tenth staff contains measures 67-72, ending with a double bar line and repeat dots.

Concert pour quatre parties de violes

Marc Antoine Charpentier (1634-1704), H 545

Bearbeitung für Doppelrohrquartett

Englischhorn

Prelude 1

Musical score for English Horn, Prelude 1, measures 1-30. The score is written in treble clef, 2/2 time signature, and B-flat major. It consists of four staves of music. The first staff starts with a whole rest, followed by a series of notes. The second staff begins at measure 9, the third at measure 18, and the fourth at measure 27. The piece concludes with a double bar line at the end of the fourth staff.

Prelude 2

Musical score for English Horn, Prelude 2, measures 1-16. The score is written in treble clef, common time (C), and B-flat major. It consists of five staves of music. The first staff starts with a whole note, followed by a series of notes. The second staff begins at measure 5 and includes first and second endings. The third staff begins at measure 9, the fourth at measure 12, and the fifth at measure 16. The piece concludes with a double bar line at the end of the fifth staff.

Sarabande



Gigue angloise



Gigue francoise

Musical score for Gigue francoise, featuring a treble clef, a key signature of one flat (B-flat), and a common time signature (C). The score consists of four staves of music. The first staff begins with a whole note G4, followed by a quarter note A4, and then a series of eighth notes. The second staff includes a first ending (1.) and a second ending (2.), both marked with repeat signs. The third and fourth staves continue the melodic line with various rhythmic patterns, including eighth and sixteenth notes, and conclude with a double bar line and repeat sign.

Passacaille

Musical score for Passacaille, featuring a treble clef, a key signature of one flat (B-flat), and a 3/4 time signature. The score consists of ten staves of music. The first staff begins with a quarter rest, followed by a series of quarter notes. The second staff includes a first ending (1.) and a second ending (2.), both marked with repeat signs. The third and fourth staves continue the melodic line with various rhythmic patterns, including eighth and sixteenth notes, and conclude with a double bar line and repeat sign.

Concert pour quatre parties de violes

Marc Antoine Charpentier (1634-1704), H 545

Bearbeitung für Doppelrohrquartett

Baritonoboe

Prelude 1

Musical score for Baritone Oboe, Prelude 1. The score consists of four staves of music in 2/2 time, key of B-flat major. The first staff starts with a measure rest and a '4' above it. The second staff has a measure rest and an '11' above it. The third staff has a measure rest and an '18' above it. The fourth staff has a measure rest and a '27' above it. The music features a mix of eighth and sixteenth notes, with some rests and dynamic markings.

Prelude 2

Musical score for Baritone Oboe, Prelude 2. The score consists of six staves of music in 3/4 time, key of B-flat major. The first staff has a measure rest and a '5' above it. The second staff has a measure rest and a '8' above it. The third staff has a measure rest and a '9' above it. The fourth staff has a measure rest and a '12' above it. The fifth staff has a measure rest and a '15' above it. The sixth staff has a measure rest and a '19' above it. The music features a mix of eighth and sixteenth notes, with some rests and dynamic markings. There are first and second endings marked with '1.' and '2.'

Gigue francoise

Musical score for Gigue francoise, Baritonoboe part. The piece is in 3/4 time and B-flat major. It consists of 20 measures. The score is written on four staves. The first staff begins with a treble clef, a key signature of one flat, and a 3/4 time signature. The melody starts with a dotted quarter note, followed by eighth notes. A first ending bracket covers measures 11-12, and a second ending bracket covers measures 13-14. Measure numbers 8, 14, and 20 are indicated at the start of their respective staves. The piece concludes with a double bar line and repeat dots.

Passecaille

Musical score for Passecaille, Baritonoboe part. The piece is in 3/4 time and B-flat major. It consists of 68 measures. The score is written on ten staves. The first staff begins with a treble clef, a key signature of one flat, and a 3/4 time signature. The melody is characterized by eighth-note patterns. Measure numbers 7, 13, 18, 23, 29, 34, 39, 50, 56, and 68 are indicated at the start of their respective staves. The piece concludes with a double bar line and repeat dots.

Concert pour quatre parties de violes

Marc Antoine Charpentier (1634-1704), H 545

Bearbeitung für Doppelrohrquartett

Fagott

Prelude 1



Musical score for Bassoon, Prelude 1. The score is written in bass clef, 2/2 time signature, and B-flat major. It begins with a triplet of eighth notes. The piece consists of 27 measures, ending with a double bar line.

Prelude 2

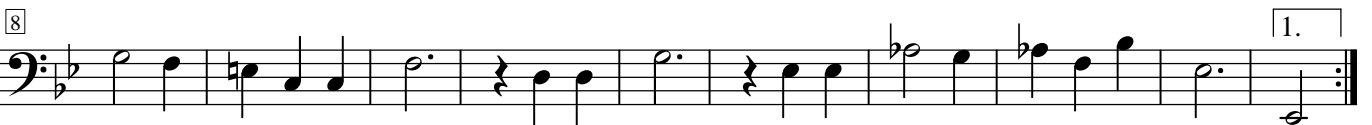


Musical score for Bassoon, Prelude 2. The score is written in bass clef, common time (C), and B-flat major. It begins with a series of eighth and sixteenth notes. The piece consists of 19 measures, ending with a double bar line. There are first and second endings indicated by bracketed lines.

Sarabande



Gigue anglaise



Gigue francoise

Musical score for Gigue francoise, bass clef, 3/4 time signature. The score consists of four staves. The first staff starts with a treble clef and a key signature of one flat. The second staff has a first ending bracket over measures 11-12 and a second ending bracket over measures 13-14. The third staff continues the melody. The fourth staff ends with a double bar line and repeat dots.

Passecaille

Musical score for Passecaille, bass clef, 3/4 time signature. The score consists of ten staves. The first staff starts with a treble clef and a key signature of one flat. The second staff has a first ending bracket over measures 11-12 and a second ending bracket over measures 13-14. The third staff continues the melody. The fourth staff ends with a double bar line and repeat dots. The fifth staff continues the melody. The sixth staff ends with a double bar line and repeat dots. The seventh staff continues the melody. The eighth staff ends with a double bar line and repeat dots. The ninth staff continues the melody. The tenth staff ends with a double bar line and repeat dots.