

WELLINGTON'S VICTORY (THE BATTLE OF VITORIA)

Ludwig van Beethoven
Op.91

Violino I.

ERSTE ABTHEILUNG. Schlacht.

Trommeln und Trompeten an der englischen Seite.

Englische Trommeln zuerst allein.



Dann treten dazu englische Trompeten in Es.

Marcia: Rule Britannia.



Trommeln' und Trompeten an der französischen Seite.

Französische Trommeln zuerst allein.

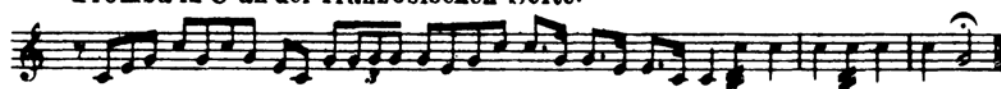


Dann treten dazu französische Trompeten in C.

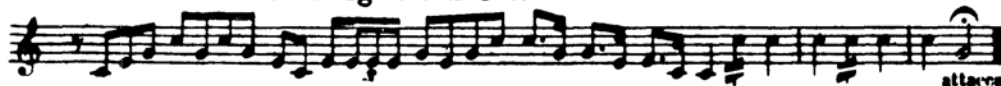
Marcia: Marlborough.



Tromba in C an der französischen Seite.



Tromba in Es an der englischen Seite.



Violino I.
Schlacht.

Allegro.

Violino I. Schlacht. Allegro. Musical score for Violino I. The score consists of ten staves of music. The first staff begins with a treble clef, a key signature of three sharps (F#, C#, G#), and a common time signature (C). The music is written in a single melodic line with various ornaments and slurs. The key signature changes to two sharps (F#, C#) at the beginning of the second staff, then to one sharp (F#) at the beginning of the third staff, and finally to one flat (Bb) at the beginning of the fourth staff. The tempo is marked 'Allegro.' at the top left. The score ends with a double bar line and a repeat sign at the end of the tenth staff.

Meno Allegro.

Violino I. Schlacht. Meno Allegro. Musical score for Violino I. The score consists of three staves of music. The first staff begins with a treble clef, a key signature of one flat (Bb), and a common time signature (C). The music is written in a single melodic line with various ornaments and slurs. The tempo is marked 'Meno Allegro.' at the top left. The score ends with a double bar line and a repeat sign at the end of the third staff.

Violino I.

3



Violino I. musical score, featuring multiple staves of music with various notes, rests, and dynamic markings such as *ff* (fortissimo). The score includes a key signature of two flats and a time signature of 4/4. The music is written in a single system with eight staves. The first staff begins with a treble clef and a key signature of two flats. The second staff has a 'C' above it, and the fifth staff has a 'D' above it. The music is characterized by rapid sixteenth-note passages and slurs.

Sturm-Marsch.

Allegro assai.



Sturm-Marsch. musical score, featuring three staves of music. The tempo is marked *Allegro assai.* The score includes a key signature of two flats and a time signature of 4/4. The music is written in a single system with three staves. The first staff begins with a treble clef and a key signature of two flats. The second staff has a 'C' above it, and the third staff has a 'D' above it. The music is characterized by rapid sixteenth-note passages and slurs.

[illegible]

Violino I.

5

G

sf *ff* *dim.*

H

p *sempre più p*

1 2 3 4 5 6 *pp*

Andante.

p *pp* *pizz.* *p* *pp*

ZWEITE ABTHEILUNG.**Sieges-Symphonie.****Intrada.****Allegro ma non troppo.**

ff **Allegro con brio**

simile

ff

Andante grazioso.

pizz. **Tempo I.** **arco.** **ff**

Tempo di Menuetto moderato.

Violini II

Tempo di Menuetto moderato.

ff *p* *ff* *pp* *più pp* *ritar.*

dim. *Allegro.*

dan - do *pp* *sempre pp*

V

Violino I.

Violino I.

The image shows the first system of a musical score for Violino I, measures 1 through 12. The music is written on a single staff in G major (one sharp) and 4/4 time. The key signature has one sharp (F#). The tempo/mood is marked 'Andante'. The score includes various musical notations such as notes, rests, and dynamic markings. The dynamics are marked as 'sempre pp' (measures 1-4), 'pp' (measure 5), 'cresc. poco a poco' (measures 6-8), 'p' (measures 9-10), 'p cresc. poco a poco' (measures 11-12), and 'pp sempre pp' (measures 13-14). The score also includes a 'Tutti.' marking at the end of measure 5. The notation includes a variety of note values, rests, and articulation marks.

sempre pp

pp

Tutti.

cresc. poco a poco

p

p cresc. poco a poco

pp sempre pp

cresc. poco a poco