

LEONORE OVERTURE NO.2

Violine I

Ludwig van Beethoven
Op.72

Adagio

ff p ff p dim.

6 2
pp cresc. sf sf

13
sempre più p

19
pp sempre staccato

25

28

31
staccato
cresc.

34

36
ff

Violine I

38 *ff*

40 *sempre ff* *pizz.* *p*

46 *dim.*

52 2 **Allegro 6** Vc.

65 *arco* *pp* *cresc. poco a poco*

72

79

86 *ff* *sf* *sf*

93 *sf* *sf* *sf* *sf* *sf* *ff* 3

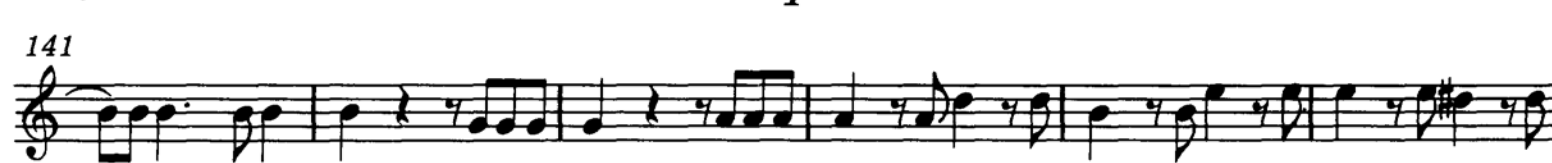
99 *sf* *sf* *sf* *sf* *ff* 3 *dim.* *p*

105

Detailed description: This is a page of a musical score for Violine I, spanning measures 38 to 105. The score is written on ten staves. It begins with a forte (*ff*) dynamic and features complex rhythmic patterns, including sixteenth and thirty-second notes. A section starting at measure 52 is marked 'Allegro 6' and includes a double bar line with a '2' above it, indicating a change in tempo or meter. The score includes various dynamics such as *sempre ff*, *pizz.* (pizzicato), *p* (piano), *dim.* (diminuendo), *pp* (pianissimo), *cresc. poco a poco* (crescendo), *sf* (sforzando), and *ff*. There are also articulation marks like accents and slurs. The piece concludes with a final melodic phrase in measure 105.

Violine I

3



176 *sf sf*

182 *sf sf*

189 *sf*

196 *sf sf*

203 *sf sf sf sf sf sf più f*

209 *fff p*

215 *dim. pp cresc.*

222 *f sf ff*

228 *p fp fp cresc.*

234 *ff sf*

240 *ff sf sf sf sf p*

246 *p*

Detailed description: This page contains the musical score for the first violin (Violine I), measures 176 through 246. The music is written on a single staff in treble clef. The key signature has two sharps (F# and C#). The score features a variety of musical notations, including triplets, slurs, and dynamic markings. The dynamics range from piano (p) to fortissimo (fff). The piece concludes with a long, sustained note in measure 246.

Violine I

5

253 *p* *sfp* *sfp* *legato*

259 *sfp* *sfp* *sfp* *sfp* *sfp* *sfp* *sfp* *sfp*

264 *sfp* *sfp*

269 *sfp* *sfp* *sfp*

274 *sfp* *f pp*

279 1 2 3 4 5 6 7

286 *f* *p*

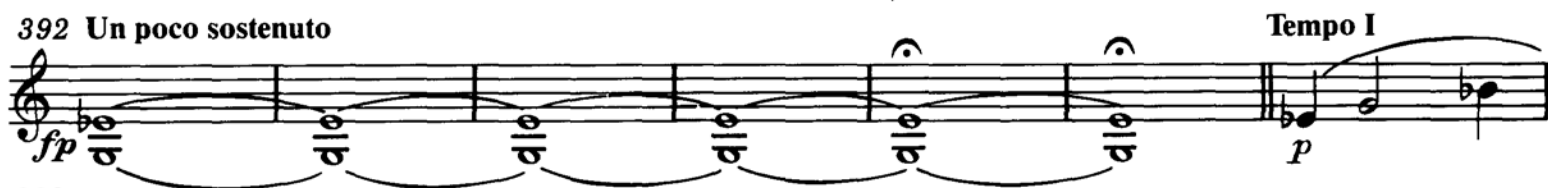
293 *f* *sempre pp*

300 *f* *sempre pp*

307 *f* *sempre pp*

313 *f* *sempre pp*

320 2 3



406 **Un poco sostenuto**



472

477

ff marcato

483

489

495

500

sf *sf*

505

sf

510

p *f* *p*

515

f *fff*

520

525

Detailed description: This page of a musical score for Violine I contains measures 472 through 525. The notation is in treble clef with a 7/8 time signature. Measures 472-476 feature a rhythmic pattern of eighth and sixteenth notes. Measure 477 begins with a *ff marcato* instruction. Measures 483-494 consist of a series of eighth notes with slurs. Measure 495 continues this pattern. Measures 500-504 show a sequence of chords and eighth notes, with *sf* (sforzando) markings at measures 502 and 504. Measures 505-509 feature a series of chords, with *sf* at measure 505. Measures 510-514 are characterized by chords and rests, with dynamics *p* (piano), *f* (forte), and *p* indicated. Measures 515-519 continue with chords and rests, with *f* and *fff* (fortississimo) markings. Measures 520-524 show a melodic line of eighth notes, with a final chord at measure 524. Measure 525 concludes with a final chord.